

## Recombinant Rat Nppb Protein, His&SUMO-tagged

Cat. No. Nppb-390R Lot. No. (See product label)

### SPECIFICATION

<b>Product Overview</b>	Recombinant Rat Nppb Protein (Ser77-Phe121) with N-His&SUMO tag was expressed in E. coli.
<b>Species</b>	Rat
<b>Source</b>	E.coli
<b>ProteinLength</b>	Ser77-Phe121
<b>Description</b>	Enables hormone activity. Involved in several processes, including cellular response to mechanical stimulus; negative regulation of cell population proliferation; and positive regulation of cGMP-mediated signaling. Located in several cellular components, including extracellular space; perinuclear region of cytoplasm; and transport vesicle. Used to study hypertension; hypertensive heart disease; myocardial infarction; polycystic kidney disease; and proteinuria. Biomarker of several diseases, including artery disease (multiple); heart disease (multiple); hyperhomocysteinemia; obesity; and type 2 diabetes mellitus. Human ortholog(s) of this gene implicated in atherosclerosis; hypertension; myocardial infarction; obesity; and systolic heart failure. Orthologous to human NPPB (natriuretic peptide B).
<b>Form</b>	Freeze-dried powder
<b>Molecular Mass</b>	Predicted Molecular Mass: 18.7 kDa Accurate Molecular Mass: 19 kDa

 Tel: 1-631-559-9269 1-516-512-3133

 Email: [info@creative-biomart.com](mailto:info@creative-biomart.com)  Fax: 1-631-938-8127

 45-1 Ramsey Road, Shirley, NY 11967, USA

<b>Purity</b>	> 95%
<b>Applications</b>	Positive Control; Immunogen; SDS-PAGE; WB.
<b>Stability</b>	The thermal stability is described by the loss rate. The loss rate was determined by accelerated thermal degradation test, that is, incubate the protein at 37 centigrade for 48h, and no obvious degradation and precipitation were observed. The loss rate is less than 5% within the expiration date under appropriate storage condition.
<b>Storage</b>	Avoid repeated freeze/thaw cycles. Store at 2-8 centigrade for one month. Aliquot and store at -80 centigrade for 12 months.
<b>Storage Buffer</b>	20mM Tris, 150mM NaCl, pH8.0, containing 1mM EDTA, 1mM DTT, 0.01% SKL, 5% Trehalose and Proclin300.
<b>Reconstitution</b>	Reconstitute in sterile water to a concentration of 0.1-1.0 mg/mL. Do not vortex.

## GENE INFORMATION

<b>Gene Name</b>	<a href="#">Nppb natriuretic peptide B [ Rattus norvegicus (Norway rat) ]</a>
<b>Official Symbol</b>	<a href="#">Nppb</a>
<b>Synonyms</b>	Nppb; natriuretic peptide B; BNP; Bnf; natriuretic peptides B; Brain natriuretic factor; brain natriuretic factor prohormone; brain natriuretic peptide; gamma-brain natriuretic peptide; iso-ANP; natriuretic peptide precursor B; natriuretic peptide precursor type B; preproBNP; proBNP
<b>Gene ID</b>	<a href="#">25105</a>
<b>mRNA Refseq</b>	<a href="#">NM_031545</a>

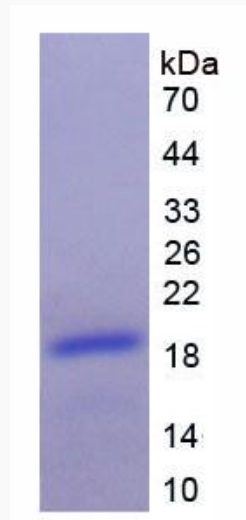
 Tel: 1-631-559-9269 1-516-512-3133

 Email: [info@creative-biomart.com](mailto:info@creative-biomart.com)  Fax: 1-631-938-8127

 45-1 Ramsey Road, Shirley, NY 11967, USA

Protein Refseq NP\_113733

UniProt ID P13205



Tel: 1-631-559-9269 1-516-512-3133

Email: [info@creative-biomart.com](mailto:info@creative-biomart.com) Fax: 1-631-938-8127

45-1 Ramsey Road, Shirley, NY 11967, USA