

Recombinant Rat Nr1i3 Protein, His-tagged

Cat. No. Nr1i3-667R Lot. No. (See product label)

SPECIFICATION

Product Overview	Recombinant Rat Nr1i3(Met1~Glu247) fused with His tag at N-terminal was expressed in E. coli.
Species	Rat
Source	E.coli
ProteinLength	Met1~Glu247
Form	PBS, pH7.4, containing 0.01% SKL, 1mM DTT, 5% Trehalose and Proclin300.
Molecular Mass	31.8kDa
Endotoxin	<1.0EU per 1ug (determined by the LAL method)
Purity	> 95%
Applications	Positive Control; Immunogen; SDS-PAGE; WB. If bio-activity of the protein is needed, please check active protein
Stability	The thermal stability is described by the loss rate. The loss rate was determined by accelerated thermal degradation test, that is, incubate the protein at 37 centigrade for 48h, and no obvious degradation and precipitation were observed. The loss rate is less than 5% within the expiration date under appropriate storage condition.

 Tel: 1-631-559-9269 1-516-512-3133

 Email: info@creative-biomart.com  Fax: 1-631-938-8127

 45-1 Ramsey Road, Shirley, NY 11967, USA

Storage	Avoid repeated freeze/thaw cycles. Store at 2-8 centigrade for one month. Aliquot and store at -80 centigrade for 12 months.
----------------	--

Reconstitution	Reconstitute in PBS or others
-----------------------	-------------------------------

GENE INFORMATION

Gene Name	Nr1i3 nuclear receptor subfamily 1, group I, member 3 [<i>Rattus norvegicus</i>]
------------------	--

Official Symbol	Nr1i3
------------------------	-------

Synonyms	NR1I3; nuclear receptor subfamily 1, group I, member 3; nuclear receptor subfamily 1 group I member 3; constitutive androstane receptor; strain Fischer nuclear receptor (CAR); nuclear receptor constitutive active receptor; CAR; MGC108525;
-----------------	--

Gene ID	65035
----------------	-------

mRNA Refseq	NM_022941
--------------------	-----------

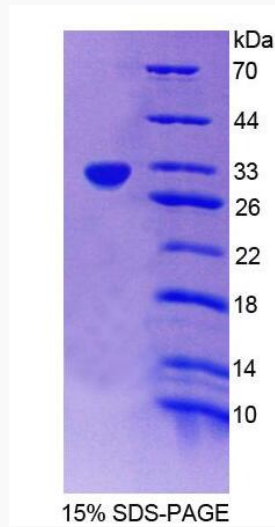
Protein Refseq	NP_075230
-----------------------	-----------

UniProt ID	Q9QUS1
-------------------	--------

 Tel: 1-631-559-9269 1-516-512-3133

 Email: info@creative-biomart.com  Fax: 1-631-938-8127

 45-1 Ramsey Road, Shirley, NY 11967, USA



Tel: 1-631-559-9269 1-516-512-3133

Email: info@creative-biomart.com Fax: 1-631-938-8127

45-1 Ramsey Road, Shirley, NY 11967, USA