

Recombinant Rat Nrg1 protein, His-tagged

Cat. No. Nrg1-1892R Lot. No. (See product label)

SPECIFICATION

Product Overview	Recombinant Rat Nrg1 aa. (Pro37~Thr169 (Accession # P43322)) fused with N-terminal His tag was produced in E. coli cells.
Species	Rat
Source	E.coli
ProteinLength	Pro37~Thr169
Description	Ligand for Erbb3 and Erbb4 receptors; gene produces many different alternative splicing isoforms; involved in neural and organ development.
Form	Freeze-dried powder
Molecular Mass	Predicted Molecular Mass: 16.0kDa.
Endotoxin	<1.0EU per 1ug (determined by the LAL method)
Purity	>95%
Characteristic	The isoelectric point is 9.1.
Applications	SDS-PAGE; WB; ELISA; IP.
Stability	The thermal stability is described by the loss rate of the target protein. The loss rate

 Tel: 1-631-559-9269 1-516-512-3133

 Email: info@creative-biomart.com  Fax: 1-631-938-8127

 45-1 Ramsey Road, Shirley, NY 11967, USA

was determined by accelerated thermal degradation test, that is, incubate the protein at 37°C for 48h, and no obvious degradation and precipitation were observed. (Referring from China Biological Products Standard, which was calculated by the Arrhenius equation.) The loss of this protein is less than 5% within the expiration date under appropriate storage condition.

Storage	Avoid repeated freeze/thaw cycles. Store at 2-8°C for one month. Aliquot and store at -80°C for 12 months.
Storage Buffer	Supplied as lyophilized form in 20mM Tris, 150mM NaCl, pH8.0, containing 1mM EDTA, 1mM DTT, 0.01% sarcosyl, 5% trehalose, and preservative.
Reconstitution	Reconstitute in sterile ddH ₂ O.

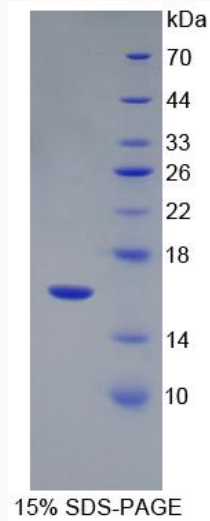
GENE INFORMATION

Gene Name	Nrg1 neuregulin 1 [Rattus norvegicus (Norway rat)]
Official Symbol	Nrg1
Synonyms	Slit3; slit guidance ligand 3; Megf5; slit homolog 3 protein; multiple EGF-like domains protein 5; multiple epidermal growth factor-like domains 5; multiple epidermal growth factor-like domains protein 5; slit-3
Gene ID	112400
mRNA Refseq	NM_001271123.1
Protein Refseq	NP_001258052.1
UniProt ID	P43322

 Tel: 1-631-559-9269 1-516-512-3133

 Email: info@creative-biomart.com  Fax: 1-631-938-8127

 45-1 Ramsey Road, Shirley, NY 11967, USA



SDS-PAGE

 Tel: 1-631-559-9269 1-516-512-3133

 Email: info@creative-biomart.com  Fax: 1-631-938-8127

 45-1 Ramsey Road, Shirley, NY 11967, USA