

## Recombinant Rat Ntf4 Protein, His-tagged

Cat. No. Ntf4-164R Lot. No. (See product label)

### SPECIFICATION

<b>Product Overview</b>	Recombinant Rat Ntf4 Protein(NP_037316.2)(Gly80~Ala209) is expressed from E. coli with a His Tag at the N-terminal.
<b>Species</b>	Rat
<b>Source</b>	E.coli
<b>ProteinLength</b>	Gly80~Ala209
<b>Form</b>	20mM Tris, 150mM NaCl, pH8.0, containing 0.01% SKL, 5% Trehalose.
<b>Molecular Mass</b>	18kDa(Analysis of differences refer to the manual)
<b>AA Sequence</b>	GVSETAPASRRGELAVCDVSGWVTDRRTAVDLRGREVEVLGEVPAAGGSPLRQY FFETRCKAESAGEGGPGVGGGGCRGVDRRHVLSSECKAKQSYVRALTADSQGRVG WRWIRIDTACVCTLLSRTGRA
<b>Endotoxin</b>	<1.0EU per 1g (determined by the LAL method)
<b>Purity</b>	> 95%
<b>Applications</b>	Positive Control; Immunogen; SDS-PAGE; WB. If bio-activity of the protein is needed, please check active protein.
<b>Notes</b>	The kit is designed for research use only, we will not be responsible for any issue if

 Tel: 1-631-559-9269 1-516-512-3133

 Email: [info@creative-biomart.com](mailto:info@creative-biomart.com)  Fax: 1-631-938-8127

 45-1 Ramsey Road, Shirley, NY 11967, USA

the kit was used in clinical diagnostic or any other procedures.

**Stability**

The thermal stability is described by the loss rate. The loss rate was determined by accelerated thermal degradation test, that is, incubate the protein at 37°C for 48h, and no obvious degradation and precipitation were observed. The loss rate is less than 5% within the expiration date under appropriate storage condition.

**Storage**

Avoid repeated freeze/thaw cycles.  
Store at 2-8°C for one month.  
Aliquot and store at -80°C for 12 months.

**Concentration**

200g/mL

**Reconstitution**

Reconstitute in 20mM Tris, 150mM NaCl (pH8.0) to a concentration of 0.1-1.0 mg/mL.  
Do not vortex.

## GENE INFORMATION

**Gene Name**

[Ntf4](#)

**Official Symbol**

[Ntf4](#)

**Synonyms**

NT5; NTF4; NT-4/5; Neurotrophic Factor 4; Neurotrophin-5

**Gene ID**

[25730](#)

**mRNA Refseq**

[NM\\_013184.3](#)

**Protein Refseq**

[NP\\_037316.2](#)

**UniProt ID**

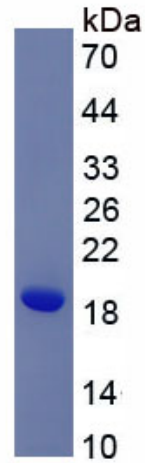
[P34131](#)

 Tel: 1-631-559-9269 1-516-512-3133

 Email: [info@creative-biomart.com](mailto:info@creative-biomart.com)  Fax: 1-631-938-8127

 45-1 Ramsey Road, Shirley, NY 11967, USA

**SDS-PAGE of Ntf4-  
164R**



 Tel: 1-631-559-9269 1-516-512-3133

 Email: [info@creative-biomart.com](mailto:info@creative-biomart.com)  Fax: 1-631-938-8127

 45-1 Ramsey Road, Shirley, NY 11967, USA