

Recombinant Rat Nup88 protein, His & T7-tagged

Cat. No. Nup88-5800R Lot. No. (See product label)

SPECIFICATION

| | |
|-------------------------|---|
| Product Overview | Recombinant Rat Nup88 aa. (Thr159-Ile422 (Accession # O08658)) fused with N-terminal His & T7 tag was produced in E. coli cells. |
| Species | Rat |
| Source | E.coli |
| ProteinLength | Thr159-Ile422 |
| Form | Freeze-dried powder |
| Molecular Mass | Predicted Molecular Mass: 33.2kDa |
| Endotoxin | <1.0EU per 1g (determined by the LAL method) |
| Purity | >95% |
| Characteristic | The isoelectric point is 5.2. |
| Applications | SDS-PAGE; WB; ELISA; IP. |
| Stability | The thermal stability is described by the loss rate. The loss rate was determined by accelerated thermal degradation test, that is, incubate the protein at 37°C for 48h, and no obvious degradation and precipitation were observed. The loss rate is less than 5% within the expiration date under appropriate storage condition. |

 Tel: 1-631-559-9269 1-516-512-3133

 Email: info@creative-biomart.com  Fax: 1-631-938-8127

 45-1 Ramsey Road, Shirley, NY 11967, USA

| | |
|-----------------------|--|
| Storage | Avoid repeated freeze/thaw cycles. Store at 2-8°C for one month. Aliquot and store at -80°C for 12 months. |
| Storage buffer | Supplied as lyophilized form in PBS, pH7.4, containing 5% trehalose, 0.01% sarcosyl. |
| Reconstitution | Reconstitute in sterile PBS, pH7.2-pH7.4. |

GENE INFORMATION

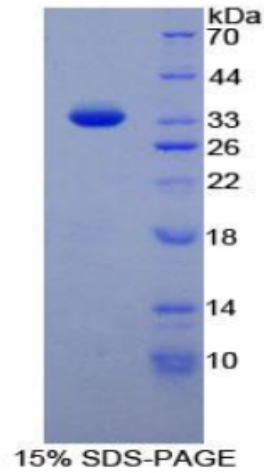
| | |
|------------------------|---|
| Gene Name | Nup88 nucleoporin 88 [<i>Rattus norvegicus</i> (Norway rat)] |
| Official Symbol | Nup88 |
| Synonyms | Nup84; Prei2; 88 kDa nuclear pore complex protein; 88 kDa nucleoporin; nucleoporin 88kDa; nucleoporin Nup84; nucleoporin Nup88; preimplantation protein 2; nuclear pore complex protein Nup88 |
| Gene ID | 113929 |
| mRNA Refseq | NM_053616.1 |
| Protein Refseq | NP_446068.1 |
| UniProt ID | O08658 |

 Tel: 1-631-559-9269 1-516-512-3133

 Email: info@creative-biomart.com  Fax: 1-631-938-8127

 45-1 Ramsey Road, Shirley, NY 11967, USA

SDS-PAGE



 Tel: 1-631-559-9269 1-516-512-3133

 Email: info@creative-biomart.com  Fax: 1-631-938-8127

 45-1 Ramsey Road, Shirley, NY 11967, USA