

Recombinant Rat Nxf1 Protein, His-tagged

Cat. No. Nxf1-406R Lot. No. (See product label)

SPECIFICATION

Product Overview Recombinant Rat Nxf1(Ala2~Tyr197) fused with His tag at N-terminal was expressed in E. coli.

Species Rat

Source E.coli

ProteinLength Ala2~Tyr197

Form PBS, pH7.4, containing 0.01% SKL, 1mM DTT, 5% Trehalose and Proclin300.

Molecular Mass 26.3kDa

Endotoxin <1.0EU per 1ug (determined by the LAL method)

Purity > 95%

Applications Positive Control; Immunogen; SDS-PAGE; WB.
If bio-activity of the protein is needed, please check active protein

Stability The thermal stability is described by the loss rate. The loss rate was determined by accelerated thermal degradation test, that is, incubate the protein at 37 centigrade for 48h, and no obvious degradation and precipitation were observed. The loss rate is less than 5% within the expiration date under appropriate storage condition.

 Tel: 1-631-559-9269 1-516-512-3133

 Email: info@creative-biomart.com  Fax: 1-631-938-8127

 45-1 Ramsey Road, Shirley, NY 11967, USA

Storage	Avoid repeated freeze/thaw cycles. Store at 2-8 centigrade for one month. Aliquot and store at -80 centigrade for 12 months.
----------------	--

Reconstitution	Reconstitute in PBS or others
-----------------------	-------------------------------

GENE INFORMATION

Gene Name	Nxf1 nuclear RNA export factor 1 [Rattus norvegicus]
------------------	--

Official Symbol	Nxf1
------------------------	------

Synonyms	NXF1; nuclear RNA export factor 1; mRNA export factor TAP; tip-associated protein; tip associating protein; tip-associating protein; nuclear RNA export factor 1 homolog; Tap; Mex67h;
-----------------	--

Gene ID	59087
----------------	-------

mRNA Refseq	NM_021579
--------------------	-----------

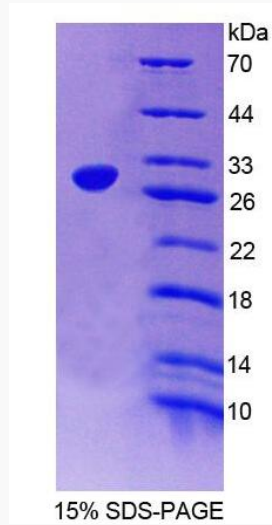
Protein Refseq	NP_067590
-----------------------	-----------

UniProt ID	O88984
-------------------	--------

 Tel: 1-631-559-9269 1-516-512-3133

 Email: info@creative-biomart.com  Fax: 1-631-938-8127

 45-1 Ramsey Road, Shirley, NY 11967, USA



Tel: 1-631-559-9269 1-516-512-3133

Email: info@creative-biomart.com Fax: 1-631-938-8127

45-1 Ramsey Road, Shirley, NY 11967, USA