

Recombinant Human OAF Protein, Myc/DDK-tagged, C13 and N15-labeled

Cat. No. OAF-1784H **Lot. No.** (See product label)

SPECIFICATION

Product Overview	OAF MS Standard C13 and N15-labeled recombinant protein (NP_848602) with a C-terminal MYC/DDK tag, was expressed in HEK293 cells.
Species	Human
Source	HEK293
Description	OAF (Out At First Homolog) is a Protein Coding gene. Diseases associated with OAF include Acute Maxillary Sinusitis and Alveolar Periostitis.
Molecular Mass	30.7 kDa
AA Sequence	MRLPGVPLARPALLLLLPLLAPLLGTGAPAE LRVRVRLPDGQVTEESLQADSDADSIS LELRKPDGTLVSFTADFKKDVKVFRA LILGELEKGGQSQFQALCFVTQLQHNEIIPSEA MAKLRQKNPRAVRQAEEVRGLEHLHMDVAVNFSQGALLSPHLHNVCAEAVDAIYTR QEDVRFWLEQGV DSSVFEALPKASEQAELPCRQVGDH GKPCVCRYGLSLAWYP CMLKYCHSRDRPTPYKCGIRSCQKSY SFDYVPQRQLCLWDEDPYPGTRTRPLEQ KLISEEDLAANDILDYKDDDDKV
Purity	> 80% as determined by SDS-PAGE and Coomassie blue staining
Stability	Stable for 3 months from receipt of products under proper storage and handling conditions.

 Tel: 1-631-559-9269 1-516-512-3133

 Email: info@creative-biomart.com  Fax: 1-631-938-8127

 45-1 Ramsey Road, Shirley, NY 11967, USA

Storage	Store at -80 centigrade. Avoid repeated freeze-thaw cycles.
----------------	---

Concentration	50 µg/mL as determined by BCA
----------------------	-------------------------------

Storage Buffer	100 mM glycine, 25 mM Tris-HCl, pH 7.3.
-----------------------	---

GENE INFORMATION

Gene Name	OAF out at first homolog [Homo sapiens (human)]
------------------	---

Official Symbol	OAF
------------------------	-----

Synonyms	OAF; OAF homolog (Drosophila); out at first protein homolog; MGC52117; HCV NS5A-transactivated protein 13 target protein 2; NS5ATP13TP2;
-----------------	--

Gene ID	220323
----------------	--------

mRNA Refseq	NM_178507
--------------------	-----------

Protein Refseq	NP_848602
-----------------------	-----------

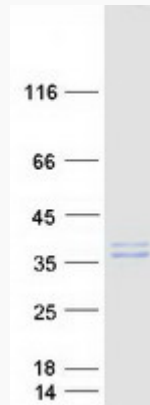
UniProt ID	Q86UD1
-------------------	--------

 Tel: 1-631-559-9269 1-516-512-3133

 Email: info@creative-biomart.com  Fax: 1-631-938-8127

 45-1 Ramsey Road, Shirley, NY 11967, USA

SDS-PAGE



 Tel: 1-631-559-9269 1-516-512-3133

 Email: info@creative-biomart.com  Fax: 1-631-938-8127

 45-1 Ramsey Road, Shirley, NY 11967, USA