

# Recombinant Human OCEL1 Protein, Myc/DDK-tagged, C13 and N15-labeled

Cat. No. OCEL1-5444H Lot. No. (See product label)

## SPECIFICATION

<b>Product Overview</b>	OCEL1 MS Standard C13 and N15-labeled recombinant protein (NP_078854) with a C-terminal MYC/DDK tag, was expressed in HEK293 cells.
<b>Species</b>	Human
<b>Source</b>	HEK293
<b>Description</b>	OCEL1 (Occludin/ELL Domain Containing 1) is a Protein Coding gene. Diseases associated with OCEL1 include Aicardi Syndrome. An important paralog of this gene is MARVELD2.
<b>Molecular Mass</b>	29.4 kDa
<b>AA Sequence</b>	MHNPDGASPTADPGSELQTLGQAARRPPPPRAGHDAPRRTRPSARKPLSCFSRR PMPREPPKTRGSRGHLHTHPPGPGPPLQGLAPRGLKTSAPRPPCQPQPGPHKAK TKKIVFEDELLSQALLGAKKPIGAIPKGHKPRPHVVPDYELKYPPVSSERERSRYVAV FQDQYGEFLELQHEVGCAQAKLRQLEALLSSLPPPQSQKEAQVAARVWREFEMKR MDPGFLDKQARCHYLKGLRHLKTQIQKFDDQGDSEGSVYFTRTRPLEQKLISEEDL AANDILDYKDDDDKV
<b>Purity</b>	> 80% as determined by SDS-PAGE and Coomassie blue staining
<b>Stability</b>	Stable for 3 months from receipt of products under proper storage and handling conditions.

 Tel: 1-631-559-9269 1-516-512-3133

 Email: [info@creative-biomart.com](mailto:info@creative-biomart.com)  Fax: 1-631-938-8127

 45-1 Ramsey Road, Shirley, NY 11967, USA

<b>Storage</b>	Store at -80 centigrade. Avoid repeated freeze-thaw cycles.
----------------	---

<b>Concentration</b>	50 µg/mL as determined by BCA
----------------------	-------------------------------

<b>Storage Buffer</b>	100 mM glycine, 25 mM Tris-HCl, pH 7.3.
-----------------------	---

## GENE INFORMATION

<b>Gene Name</b>	OCEL1 occludin/ELL domain containing 1 [ Homo sapiens (human) ]
------------------	---

<b>Official Symbol</b>	OCEL1
------------------------	-------

<b>Synonyms</b>	OCEL1; occludin/ELL domain containing 1; occludin/ELL domain-containing protein 1; FLJ22709; FWP009; S863-9;
-----------------	--

<b>Gene ID</b>	79629
----------------	-------

<b>mRNA Refseq</b>	NM_024578
--------------------	-----------

<b>Protein Refseq</b>	NP_078854
-----------------------	-----------

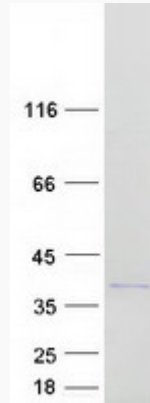
<b>UniProt ID</b>	Q9H607
-------------------	--------

 Tel: 1-631-559-9269 1-516-512-3133

 Email: [info@creative-biomart.com](mailto:info@creative-biomart.com)  Fax: 1-631-938-8127

 45-1 Ramsey Road, Shirley, NY 11967, USA

**SDS-PAGE**



 Tel: 1-631-559-9269 1-516-512-3133

 Email: [info@creative-biomart.com](mailto:info@creative-biomart.com)  Fax: 1-631-938-8127

 45-1 Ramsey Road, Shirley, NY 11967, USA