

# Recombinant Human OCM2 Protein, Myc/DDK-tagged, C13 and N15-labeled

**Cat. No.** OCM2-3836H    **Lot. No.** (See product label)

## SPECIFICATION

<b>Product Overview</b>	OCM2 MS Standard C13 and N15-labeled recombinant protein (NP_006179) with a C-terminal MYC/DDK tag, was expressed in HEK293 cells.
<b>Species</b>	Human
<b>Source</b>	HEK293
<b>Description</b>	This gene is similar to the oncomodulin gene, a high-affinity calcium ion-binding protein that belongs to the superfamily of calmodulin proteins, also known as the EF-hand proteins.
<b>Molecular Mass</b>	12.2 kDa
<b>AA Sequence</b>	MSITDVLSADDIAAALQECRDPDTFEPQKFFQTSGLSKMSANQVKDVFRFIDNDQSG YLDEEELKFFLQKFESGARELTESETKSLMAAADNDGDGKIGAEFEQEMVHSTRTR PLEQKLISEEDLAANDILDYKDDDDKV
<b>Purity</b>	> 80% as determined by SDS-PAGE and Coomassie blue staining
<b>Stability</b>	Stable for 3 months from receipt of products under proper storage and handling conditions.
<b>Storage</b>	Store at -80 centigrade. Avoid repeated freeze-thaw cycles.

 Tel: 1-631-559-9269    1-516-512-3133

 Email: [info@creative-biomart.com](mailto:info@creative-biomart.com)     Fax: 1-631-938-8127

 45-1 Ramsey Road, Shirley, NY 11967, USA

**Concentration** 50 µg/mL as determined by BCA

**Storage Buffer** 100 mM glycine, 25 mM Tris-HCl, pH 7.3.

## GENE INFORMATION

**Gene Name** OCM2 oncomodulin 2 [ Homo sapiens (human) ]

**Official Symbol** OCM2

**Synonyms** OCM2; oncomodulin 2; putative oncomodulin-2; OM; parvalbumin beta; OCM;

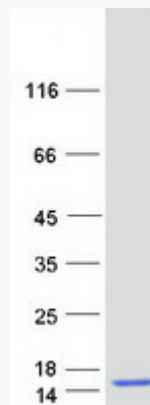
**Gene ID** 4951

**mRNA Refseq** NM\_006188

**Protein Refseq** NP\_006179

**UniProt ID** P0CE71

## SDS-PAGE



 Tel: 1-631-559-9269 1-516-512-3133

 Email: [info@creative-biomart.com](mailto:info@creative-biomart.com)  Fax: 1-631-938-8127

 45-1 Ramsey Road, Shirley, NY 11967, USA