

Active Recombinant Full Length Human OCRL Protein, C-Flag-tagged

Cat. No. OCRL-459HFL **Lot. No.** (See product label)

SPECIFICATION

Product Overview	Recombinant Full Length Human OCRL Protein, fused to Flag-tag at C-terminus, was expressed in Mammalian cells.
Species	Human
Source	Mammalian Cells
Description	This gene encodes an inositol polyphosphate 5-phosphatase. This protein is involved in regulating membrane trafficking and is located in numerous subcellular locations including the trans-Golgi network, clathrin-coated vesicles and, endosomes and the plasma membrane. This protein may also play a role in primary cilium formation. Mutations in this gene cause oculocerebrorenal syndrome of Lowe and also Dent disease. Alternate splicing results in multiple transcript variants.
Form	25 mM Tris HCl, pH 7.3, 100 mM glycine, 10% glycerol.
Bio-activity	Enzyme activity
Molecular Mass	104 kDa
AA Sequence	MEPPLPVGAAQPLATVEGMEMKGPLREPCALTLAQRNGQYELIIQLHEKEQHVQDIIPI NSHFRCVQEAEE TLLIDIASNSGCKIRVQGDWIRERRFEIPDEEHCLKFLSAVLAAQK AQSQLLVPEQKDSSSWYQKLDTKD KPSVFSGLLGFEDNFSSMNLDDKINSQNQPT GIHREPPPPFVSNKMLPREKEASNKEQPKVTNTMRKLF VPNTQSGQREGLIKHILA

 Tel: 1-631-559-9269 1-516-512-3133

 Email: info@creative-biomart.com  Fax: 1-631-938-8127

 45-1 Ramsey Road, Shirley, NY 11967, USA

KREKEYVNIQTFRFFVGTWNVNGQSPDSGLEPWLNCDPNPPDIYCIGFQELD LSTE
 AFFYFESVKEQEWSMAVERGLHSKAKYKKVQLVRLVGMMLLIFARKDQCRYIRDIAT
 ETVGTGIMG KMGNKGGVAVRFVFNHTTFCIVNSHLAAHVEDFERRNQDYKDICAR
 MSFVVPNQTLPQLNIMKHEVVIWL GDLNYRLCMPDANEVKS LINKKDLQRLLKFDQL
 NIQRTQKKAFVDFNEGEIKFIPTYKYDSKTDRWDSSG KCRVPAWCDRILWRGTNVN
 QLNYSRSHMELKTS DHKPV SALFHIGVKVVDERRYRKFV FSDSVRIMDRMEND FLPSL
 ELSRREFVFENVKFRQLQKEKFQISNNGQVPCHFSFIPKLNSQYCKPWLRAEPFE
 GYLEPNETV DISLDVYVSKDSVTILNSGEDKIEDILVLHLDRGKDYFLTISGNYLPSCF
 GTSLEALCRMKRPIREVPVT KLIDLEEDSFLEKEKSLLQMVPLDEGASERPLQVPKEI
 WLLVDHLFKYACHQEDLFQTPGMQEELQQIID CLDTSIPETIPGSNHSVAEALLIFLE
 ALPEPVICYELYQRCLDSAYDPRICRQVISQLPRCHRNVFRYLM
 AFLRELLKFSEYNSVNANMIATLFTSLLLPPPNLMARQTPSDRQRRAIQFLLGFLGGS
 EEDTRTRPLEQKLISEEDLAANDILDYKDDDDKV

Purity	> 80% as determined by SDS-PAGE and Coomassie blue staining.
Stability	Stable for 12 months from the date of receipt of the product under proper storage and handling conditions. Avoid repeated freeze-thaw cycles.
Storage	Store at -80 centigrade.
Concentration	>50 ug/mL as determined by microplate BCA method.
Preparation	Recombinant protein was captured through anti-DDK affinity column followed by conventional chromatography steps.
Protein Families	Druggable Genome
Protein Pathways	Inositol phosphate metabolism, Metabolic pathways, Phosphatidylinositol signaling system

 Tel: 1-631-559-9269 1-516-512-3133

 Email: info@creative-biomart.com  Fax: 1-631-938-8127

 45-1 Ramsey Road, Shirley, NY 11967, USA

Full Length Full L.

GENE INFORMATION

Gene Name OCRL OCRL inositol polyphosphate-5-phosphatase [Homo sapiens (human)]

Official Symbol OCRL

Synonyms LOCR; DENT2; NPHL2; OCRL1; Dent-2; INPP5F; OCRL-1

Gene ID 4952

mRNA Refseq NM_000276.4

Protein Refseq NP_000267.2

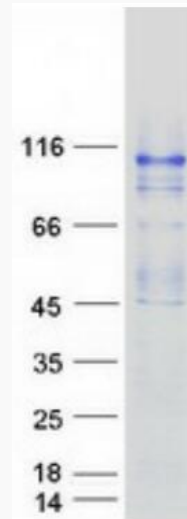
MIM 300535

UniProt ID Q01968

 Tel: 1-631-559-9269 1-516-512-3133

 Email: info@creative-biomart.com  Fax: 1-631-938-8127

 45-1 Ramsey Road, Shirley, NY 11967, USA



Coomassie blue staining of purified OCRL protein.

 Tel: 1-631-559-9269 1-516-512-3133

 Email: info@creative-biomart.com  Fax: 1-631-938-8127

 45-1 Ramsey Road, Shirley, NY 11967, USA