

# Recombinant Human OCRL Protein, Myc/DDK-tagged, C13 and N15-labeled

**Cat. No.** OCRL-5112H    **Lot. No.** (See product label)

## SPECIFICATION

<b>Product Overview</b>	OCRL MS Standard C13 and N15-labeled recombinant protein (NP_000267) with a C-terminal MYC/DDK tag, was expressed in HEK293 cells.
<b>Species</b>	Human
<b>Source</b>	HEK293
<b>Description</b>	This gene encodes an inositol polyphosphate 5-phosphatase. This protein is involved in regulating membrane trafficking and is located in numerous subcellular locations including the trans-Golgi network, clathrin-coated vesicles and, endosomes and the plasma membrane. This protein may also play a role in primary cilium formation. Mutations in this gene cause oculocerebrorenal syndrome of Lowe and also Dent disease. Alternate splicing results in multiple transcript variants.
<b>Molecular Mass</b>	104 kDa
<b>AA Sequence</b>	MEPPLPVGAQPLATVEGMEMKGPLREPCALTLAQRNGQYELIQLHEKEQHVQDIIPI NSHFRCVQEAETLLIDIASNSGCKIRVQGDWIRERRFEIPDEEHCLKFLSAVLAQK AQSQLLVPEQKDSSSWYQKLDTKDKPSVFSGLLGFEDNFSSMNLDDKINSQNQPTG IHREPPPPFVSVNKMLPREKEASNKEQPKVTNTMRKLFVPNTQSGQREGLIKHILAK REKEYVNIQTFRFFVGTWNVNGQSPDSGLEPWLNCDPNPPDIYCIGFQELDLSTEF FYFESVKEQEWMAVERGLHSAKAKYKKVQLVRLVGMMLLIFARKDQCRYIRDIAETET VGTGIMGKMGNGGVAVRVVFHNTTFCIVNSHLAAHVEDFERRNQDYKDICARMSF

 Tel: 1-631-559-9269    1-516-512-3133

 Email: [info@creative-biomart.com](mailto:info@creative-biomart.com)     Fax: 1-631-938-8127

 45-1 Ramsey Road, Shirley, NY 11967, USA

VVPNQTLPQLNIMKHEVVIWLGDLDNYRLCMPDANEVKS LINKKDLQRLLKFDQLNIQR  
 TQKKAFVDFNEGEIKFIPTYKYDSKTDRWDSSGKCRVPAWCDRILWRGTNVNQLNY  
 RSHMELKTS DHKPV SALFHIGVKVVDERRYRKVFEDSVRIMDRMENDFLPSLELSRR  
 EFVFNKFRQLQKEKFQISNNGQVPCHFSFIPKLNDSQYCKPWLRAEPFEGYLEP  
 NETVDISLDVYVSKDSVTILNSGEDKIEDILVLHLDRGKDYFLTISGNYLPSCFGTSLEA  
 LCRMKRPIREVPVTKLIDLEEDSFLEKEKSLQMVPLDEGASERPLQVPKEIWLLVDH  
 LFKYACHQEDLFQTPGMQEELQQIIDCLDTSIPETIPGSNHSVAEALLIFLEALPEPVIC  
 YELYQRCLDSAYDPRICRQVISQLPRCHRNVFRYLMAFLRELLKFSEYNSVNANMIA  
 TLFTSLLL RPPPNLMARQTPSDRQRAIQFLLGFLGSEEDTRTRPLEQKLISEEDLAA  
 NDILDYKDDDDKV

**Purity** > 80% as determined by SDS-PAGE and Coomassie blue staining

**Stability** Stable for 3 months from receipt of products under proper storage and handling conditions.

**Storage** Store at -80 centigrade. Avoid repeated freeze-thaw cycles.

**Concentration** 50 µg/mL as determined by BCA

**Storage Buffer** 100 mM glycine, 25 mM Tris-HCl, pH 7.3.

## GENE INFORMATION

**Gene Name** OCRL oculocerebrorenal syndrome of Lowe [ Homo sapiens (human) ]

**Official Symbol** OCRL

**Synonyms** OCRL; oculocerebrorenal syndrome of Lowe; inositol polyphosphate 5-phosphatase OCRL-1; OCRL1; Lowe oculocerebrorenal syndrome protein; phosphatidylinositol polyphosphate 5-phosphatase; LOCR; NPHL2; INPP5F; OCRL-1;

 Tel: 1-631-559-9269 1-516-512-3133

 Email: [info@creative-biomart.com](mailto:info@creative-biomart.com)  Fax: 1-631-938-8127

 45-1 Ramsey Road, Shirley, NY 11967, USA

Gene ID 4952

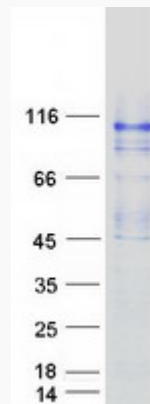
mRNA Refseq NM\_000276

Protein Refseq NP\_000267

MIM 300535

UniProt ID Q01968

SDS-PAGE



Tel: 1-631-559-9269 1-516-512-3133

Email: [info@creative-biomart.com](mailto:info@creative-biomart.com) Fax: 1-631-938-8127

45-1 Ramsey Road, Shirley, NY 11967, USA