

Recombinant Human ODC1 Protein, Myc/DDK-tagged, C13 and N15-labeled

Cat. No. ODC1-3617H **Lot. No.** (See product label)

SPECIFICATION

Product Overview	ODC1 MS Standard C13 and N15-labeled recombinant protein (NP_002530) with a C-terminal MYC/DDK tag, was expressed in HEK293 cells.
Species	Human
Source	HEK293
Description	This gene encodes the rate-limiting enzyme of the polyamine biosynthesis pathway which catalyzes ornithine to putrescine. The activity level for the enzyme varies in response to growth-promoting stimuli and exhibits a high turnover rate in comparison to other mammalian proteins. Originally localized to both chromosomes 2 and 7, the gene encoding this enzyme has been determined to be located on 2p25, with a pseudogene located on 7q31-qter. Multiple alternatively spliced transcript variants encoding distinct isoforms have been identified.
Molecular Mass	51.1 kDa
AA Sequence	MNCFGNEEFDCHFLDEGFTA KDILDQKINEVSSDDKDAFYVADLGDILKKHLRWLK ALPRVTPFYAVKCNDSKAIVKTLAATGTGFDCASKTEIQLVQSLGVPPERIIYANPCK QVSIKYAANNGVQMMTFDSEVELMKVARAHPKAKLVLR IATDDSKAVCRLSVKFG ATLRTSRLLLERAKELNIDVVGVSFHV GSGCTDPETFVQAISDARCVFDMGAEVGF S MYLLDIGGGFPGSE DVKLFEEITGVINPALDKYFPSDSGVRIIAEPGRYYVASAFTLA VNIIAKKIVLKEQTGS DDEDESSEQTFMYVNDGVYGSFNCILYDHAHVKPLLQKRPK

 Tel: 1-631-559-9269 1-516-512-3133

 Email: info@creative-biomart.com  Fax: 1-631-938-8127

 45-1 Ramsey Road, Shirley, NY 11967, USA

PDEKYYSSSIWGPTCDGLDRIVERCDLPEMHVGDWMLFENMGAYTVAAASTFNGF
 QRPTIYYVMSGPAWQLMQQFQNPDPPEVEEQDASTLPVSCAWESGMKRHRAAC
 ASASINVTRTRPLEQKLISEEDLAANDILDYKDDDDKV

Purity > 80% as determined by SDS-PAGE and Coomassie blue staining

Stability Stable for 3 months from receipt of products under proper storage and handling conditions.

Storage Store at -80 centigrade. Avoid repeated freeze-thaw cycles.

Concentration 50 µg/mL as determined by BCA

Storage Buffer 100 mM glycine, 25 mM Tris-HCl, pH 7.3.

GENE INFORMATION

Gene Name ODC1 ornithine decarboxylase 1 [Homo sapiens (human)]

Official Symbol ODC1

Synonyms ODC1; ornithine decarboxylase 1; ornithine decarboxylase; ODC;

Gene ID 4953

mRNA Refseq NM_002539

Protein Refseq NP_002530

MIM 165640

 Tel: 1-631-559-9269 1-516-512-3133

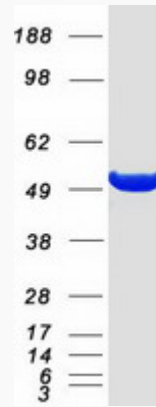
 Email: info@creative-biomart.com  Fax: 1-631-938-8127

 45-1 Ramsey Road, Shirley, NY 11967, USA

UniProt ID

P11926

SDS-PAGE



 Tel: 1-631-559-9269 1-516-512-3133

 Email: info@creative-biomart.com  Fax: 1-631-938-8127

 45-1 Ramsey Road, Shirley, NY 11967, USA