

## Recombinant Human ODC1 Protein (Met1-Val461), N-T7 and C-His tagged

Cat. No. ODC1-4760H Lot. No. (See product label)

### SPECIFICATION

<b>Product Overview</b>	Recombinant human ODC1 (Met1-Val461) fused with the N-terminal T7 tag and C-terminal His tag was expressed in E. coli.
<b>Species</b>	Human
<b>Source</b>	E.coli
<b>ProteinLength</b>	Met1-Val461
<b>Form</b>	Lyophilized powder/frozen liquid
<b>Molecular Mass</b>	50.71 kDa
<b>Purity</b>	>90% as determined by SDS-PAGE.
<b>Notes</b>	For research use only.
<b>Storage</b>	Use a manual defrost freezer and avoid repeated freeze thaw cycles. Store at 2 to 8 centigrade for one week. Store at -20 to -80 centigrade for twelve months from the date of receipt.
<b>Storage Buffer</b>	Supplied as solution form in PBS or lyophilized from PBS.
<b>Reconstitution</b>	Reconstitute in sterile water for a stock solution.

 Tel: 1-631-559-9269 1-516-512-3133

 Email: [info@creative-biomart.com](mailto:info@creative-biomart.com)  Fax: 1-631-938-8127

 45-1 Ramsey Road, Shirley, NY 11967, USA

**Shipping**

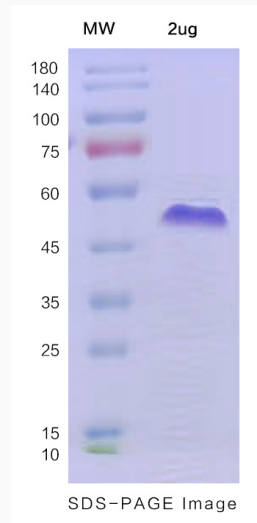
They are shipped out with dry ice/blue ice unless customers require otherwise.

**GENE INFORMATION**

<b>Gene Name</b>	ODC1 ornithine decarboxylase 1 [ Homo sapiens (human) ]
<b>Official Symbol</b>	ODC1
<b>Synonyms</b>	ODC1; ornithine decarboxylase 1; ornithine decarboxylase; ODC;
<b>Gene ID</b>	4953
<b>mRNA Refseq</b>	NM_002539
<b>Protein Refseq</b>	NP_002530
<b>MIM</b>	165640
<b>UniProt ID</b>	P11926

 Tel: 1-631-559-9269 1-516-512-3133 Email: [info@creative-biomart.com](mailto:info@creative-biomart.com)  Fax: 1-631-938-8127 45-1 Ramsey Road, Shirley, NY 11967, USA

**SDS-PAGE**



 Tel: 1-631-559-9269 1-516-512-3133

 Email: [info@creative-biomart.com](mailto:info@creative-biomart.com)  Fax: 1-631-938-8127

 45-1 Ramsey Road, Shirley, NY 11967, USA