

Active Recombinant Full Length Human ODC1 Protein, C-Flag-tagged

Cat. No. ODC1-59HFL **Lot. No.** (See product label)

SPECIFICATION

Product Overview	Recombinant Full Length Human ODC1 Protein, fused to Flag-tag at C-terminus, was expressed in Mammalian cells.
Species	Human
Source	Mammalian Cells
Description	This gene encodes the rate-limiting enzyme of the polyamine biosynthesis pathway which catalyzes ornithine to putrescine. The activity level for the enzyme varies in response to growth-promoting stimuli and exhibits a high turnover rate in comparison to other mammalian proteins. Originally localized to both chromosomes 2 and 7, the gene encoding this enzyme has been determined to be located on 2p25, with a pseudogene located on 7q31-qter. Multiple alternatively spliced transcript variants encoding distinct isoforms have been identified.
Form	25 mM Tris HCl, pH 7.3, 100 mM glycine, 10% glycerol.
Bio-activity	Enzyme activity
Molecular Mass	51 kDa
AA Sequence	MNNFGNEEFDCHFLDEGFTA KDILDQKINEVSSSDDKDAFYVADLGDILKKHLRWLK ALPRVTPFYAVKC NDSKAIVKTLAATGTGFDCASKTEIQLVQSLGVPPERIIYANPCK QVSIKYAANNGVQMMTFDSEVELM KVARAHPKAKLVLRITDDSKAVCRLSVKFG

 Tel: 1-631-559-9269 1-516-512-3133

 Email: info@creative-biomart.com  Fax: 1-631-938-8127

 45-1 Ramsey Road, Shirley, NY 11967, USA

ATLRTSRLLLLERAKELNIDVVGVSFHVSGSGCTDPETFVQ AISDARCVFDMGAEVGFSS
 MYLLDIGGGFPGSEDEVKLFEEITGVINPALDKYFSPDSGVRIIAEPGRYYV ASAFTL
 AVNIIAKKIVLKEQTGSDDDEDESSEQTFMYYVNDGVYGSFNCILYDHAHVKPLLQKRP
 KPDEKY YSSSIWGPTCDGLDRIVERCDLPEMHVGDWMLFENMGAYTVAAASTFNG
 FQRPTIYYVMSGPAWQLMQQF
 QNPDFPPEVEEQDASTLPVSCAWESGMKRHRAACASASINVTRTRPLEQKLISEED
 LAANDILDYKDDDDKV

Purity > 80% as determined by SDS-PAGE and Coomassie blue staining.

Stability Stable for 12 months from the date of receipt of the product under proper storage and handling conditions. Avoid repeated freeze-thaw cycles.

Storage Store at -80 centigrade.

Concentration >50 ug/mL as determined by microplate BCA method.

Preparation Recombinant protein was captured through anti-DDK affinity column followed by conventional chromatography steps.

Protein Families Druggable Genome

Protein Pathways Arginine and proline metabolism, Glutathione metabolism, Metabolic pathways

Full Length Full L.

GENE INFORMATION

Gene Name ODC1 ornithine decarboxylase 1 [Homo sapiens (human)]

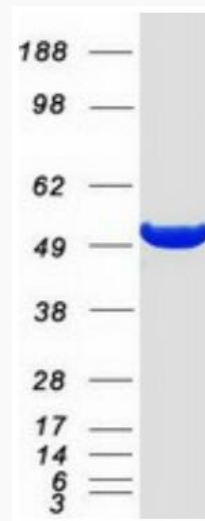
Official Symbol ODC1

 Tel: 1-631-559-9269 1-516-512-3133

 Email: info@creative-biomart.com  Fax: 1-631-938-8127

 45-1 Ramsey Road, Shirley, NY 11967, USA

Synonyms	ODC; BABS; NEDBA; NEDBIA
Gene ID	4953
mRNA Refseq	NM_002539.3
Protein Refseq	NP_002530.1
MIM	165640
UniProt ID	P11926



Coomassie blue staining of purified ODC1 protein.

 Tel: 1-631-559-9269 1-516-512-3133

 Email: info@creative-biomart.com  Fax: 1-631-938-8127

 45-1 Ramsey Road, Shirley, NY 11967, USA