

Recombinant Human ODF3L1 Protein, Myc/DDK-tagged, C13 and N15-labeled

Cat. No. ODF3L1-6578H **Lot. No.** (See product label)

SPECIFICATION

Product Overview	ODF3L1 MS Standard C13 and N15-labeled recombinant protein (NP_787077) with a C-terminal MYC/DDK tag, was expressed in HEK293 cells.
Species	Human
Source	HEK293
Description	ODF3L1 (Outer Dense Fiber Of Sperm Tails 3 Like 1) is a Protein Coding gene. An important paralog of this gene is ODF3L2.
Molecular Mass	31.1 kDa
AA Sequence	MKLPKGTRSSVYFAQHPEKEPLPSRQEVKQTPVIMAKIKGPGPAKYLRPSCTGYIDH DISMFKAPAYTLHSRHSEKRMVCHSSPGPCYLLDPKITRFGMSSCPQVPMEERISNL RLNPTLASCQYYFEKIHPPGERRAPQYTFGYRRPYRVM DLNPAPNQYQMPLLLGPN TPVSRAAPCYSLASRDKNWFKEDVAGGPGPTTYARPEPSIYQNRSP TY SMAKRFA YPLDLTPRPGPGSHEVQQVTVHKPHIPAFTMGIKHSLHLCPLVIDIRDTRTRPLEQKLI SEEDLAANDILDYKDDDDKV
Purity	> 80% as determined by SDS-PAGE and Coomassie blue staining
Stability	Stable for 3 months from receipt of products under proper storage and handling conditions.

 Tel: 1-631-559-9269 1-516-512-3133

 Email: info@creative-biomart.com  Fax: 1-631-938-8127

 45-1 Ramsey Road, Shirley, NY 11967, USA

Storage	Store at -80 centigrade. Avoid repeated freeze-thaw cycles.
----------------	---

Concentration	50 µg/mL as determined by BCA
----------------------	-------------------------------

Storage Buffer	100 mM glycine, 25 mM Tris-HCl, pH 7.3.
-----------------------	---

GENE INFORMATION

Gene Name	ODF3L1 outer dense fiber of sperm tails 3-like 1 [Homo sapiens (human)]
------------------	---

Official Symbol	ODF3L1
------------------------	--------

Synonyms	ODF3L1; outer dense fiber of sperm tails 3-like 1; outer dense fiber protein 3-like protein 1; MGC48986;
-----------------	--

Gene ID	161753
----------------	--------

mRNA Refseq	NM_175881
--------------------	-----------

Protein Refseq	NP_787077
-----------------------	-----------

UniProt ID	Q8IXM7
-------------------	--------

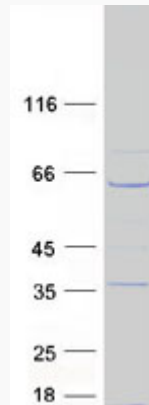
 Tel: 1-631-559-9269 1-516-512-3133

 Email: info@creative-biomart.com  Fax: 1-631-938-8127

 45-1 Ramsey Road, Shirley, NY 11967, USA



SDS-PAGE



Tel: 1-631-559-9269 1-516-512-3133

Email: info@creative-biomart.com Fax: 1-631-938-8127

45-1 Ramsey Road, Shirley, NY 11967, USA