

Recombinant Human OGDHL Protein, Myc/DDK-tagged, C13 and N15-labeled

Cat. No. OGDHL-3599H **Lot. No.** (See product label)

SPECIFICATION

Product Overview	OGDHL MS Standard C13 and N15-labeled recombinant protein (NP_060715) with a C-terminal MYC/DDK tag, was expressed in HEK293 cells.
Species	Human
Source	HEK293
Description	The protein encoded by this gene is similar to oxoglutarate dehydrogenase (OGDH) of the OGDH complex, which degrades glucose and glutamate. This gene encodes several isoforms, including some that appear to localize to mitochondria. The encoded protein down-regulates the AKT signaling cascade and can suppress the growth of cervical cancer cells.
Molecular Mass	114.5 kDa
AA Sequence	MSQLRLLPSRLGVQAARLLAAHDVPVFGWRSRSSGPPATFPSSKGGGGSSYMEEM YFAWLENPQSVHKSWDSFFREASEEAFSGSAQPRPPSVVHESRSVSSRTKTSKL VEDHLAVQSLIRAYQIRGHHVAQLDPLGILDADLDSFVPSDLITTIDKLAFYDLQEADL DKEFQLPTTTFFIGGSENTLSLREIIRRENTYCQHIGLEFMFINDVEQCQWIRQKFETP GVMQFSSEEKRTLLARLVRSMRFEDFLARKWSSEKRFGLGCEVMIPALKTIIDKSS EMGIENVILGMPHRGRLNVLANVIRKDLEQIFCQFDPKLEAADEGSGDVKYHLGMYH ERINRVNTRNITLSLVANPSHLEAVDPVQQGKTKAEQFYRGDAQGGKKVMSILVHGDA AFAGQGVVYETFHLSLPSYTTNGTVHVVNNQIGFTTDPRMARSSPYPTDVARVV

 Tel: 1-631-559-9269 1-516-512-3133

 Email: info@creative-biomart.com  Fax: 1-631-938-8127

 45-1 Ramsey Road, Shirley, NY 11967, USA

NAPIFHVNADDPEAVIYVCSVAAEWRNTFNKDVVVDLVCYRRRGHNEMDEPMFTQL
 LMYKQIHRQVPVLKKYADKLI AEGTVTLQEFEEEEIAKYDRICEEAYGRSKDKKILHIKH
 WLNSPWPGFFNVDGEPKSMTCPATGIPEDMLTHIGSVASSVPLEDFKIHTGLSRILR
 GRADMTKNRTVDWALAEYMAFGSLLKEGIHVRLSGQDVERGTFSHRHHVLHDQEV
 DRRTCVP MNHLWPDQAPYTV CNSSLSEYGV LGFELGYAMASPINALVLWEAQFGDF
 HNTAQCIIDQFISTGQAKWVRHNGIVLLLPHGMEGMGPEHSSARPERFLQMSNDDS
 DAYPAFTKDFEVSQLYDCNWIVVNCSTPANYFHVLRQILLPFRKPLIIFTPKSLLRHP
 EAKSSFDQMVSGTSFQRVIPEDGAAARAPEQVQRLIFCTGKVYYDLVKERSSQDLE
 EKVAITRLEQISPPFDLIKQEA EKYPGAELAWCQEEHKNMGYYDYISPRFMTILRRA
 RPIWYVGRDPAAAPATGNRNTHLVSLKKFLDTAFNLQAFEGKTFTRTRPLEQKLISE
 EDLAANDILDYKDDDDKV

Purity > 80% as determined by SDS-PAGE and Coomassie blue staining

Stability Stable for 3 months from receipt of products under proper storage and handling conditions.

Storage Store at -80 centigrade. Avoid repeated freeze-thaw cycles.

Concentration 50 µg/mL as determined by BCA

Storage Buffer 100 mM glycine, 25 mM Tris-HCl, pH 7.3.

GENE INFORMATION

Gene Name OGDHL oxoglutarate dehydrogenase-like [Homo sapiens (human)]

Official Symbol OGDHL

Synonyms OGDHL; oxoglutarate dehydrogenase L; 2-oxoglutarate dehydrogenase-like, mitochondrial; 2-oxoglutarate dehydrogenase complex component E1-like; OGDC-

 Tel: 1-631-559-9269 1-516-512-3133

 Email: info@creative-biomart.com  Fax: 1-631-938-8127

 45-1 Ramsey Road, Shirley, NY 11967, USA

E1-like; alpha-ketoglutarate dehydrogenase-like; oxoglutarate dehydrogenase like;
EC 1.2.4.-

Gene ID [55753](#)

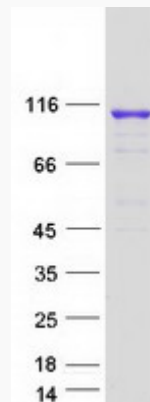
mRNA Refseq [NM_018245](#)

Protein Refseq [NP_060715](#)

MIM [617513](#)

UniProt ID [Q9ULD0](#)

SDS-PAGE



 Tel: 1-631-559-9269 1-516-512-3133

 Email: info@creative-biomart.com  Fax: 1-631-938-8127

 45-1 Ramsey Road, Shirley, NY 11967, USA