

Recombinant Human OGN Protein, Myc/DDK-tagged, C13 and N15-labeled

Cat. No. OGN-1673H Lot. No. (See product label)

SPECIFICATION

Product Overview	OGN MS Standard C13 and N15-labeled recombinant protein (NP_148935) with a C-terminal MYC/DDK tag, was expressed in HEK293 cells.
Species	Human
Source	HEK293
Description	This gene encodes a member of the small leucine-rich proteoglycan (SLRP) family of proteins. The encoded protein induces ectopic bone formation in conjunction with transforming growth factor beta and may regulate osteoblast differentiation. High expression of the encoded protein may be associated with elevated heart left ventricular mass. Alternative splicing results in multiple transcript variants.
Molecular Mass	31.8 kDa
AA Sequence	MKTLQSTLLLLLLVPLIKPAPPTQQDSRIIYDYGTDNFEESIFSQDYEDKYLDGKNIKE KETVIIPNEKSLQLQKDEAITPLPPKKENDEMP TCLLCVCLSGSVYCEEVDIDAVPPLP KESAYLYARFNKIKKLTAKDFADIPNLRRLDFTGNLIEDIEDGTFSKLSLLEELSLAENQ LLKLPVLPPKLT LFNAYNKIKSRGIKANAFKLNLTFLYLDHNALESVPLNLPESLR VIHLQFNNIASITDDTFCKANDTSYIRDRIEEIRLEGNPVILGKHPNSFICLKRLPIGSYF TRTRPLEQKLISEEDLAANDILDYKDDDDKV
Purity	> 80% as determined by SDS-PAGE and Coomassie blue staining

 Tel: 1-631-559-9269 1-516-512-3133

 Email: info@creative-biomart.com  Fax: 1-631-938-8127

 45-1 Ramsey Road, Shirley, NY 11967, USA

Stability	Stable for 3 months from receipt of products under proper storage and handling conditions.
Storage	Store at -80 centigrade. Avoid repeated freeze-thaw cycles.
Concentration	50 µg/mL as determined by BCA
Storage Buffer	100 mM glycine, 25 mM Tris-HCl, pH 7.3.

GENE INFORMATION

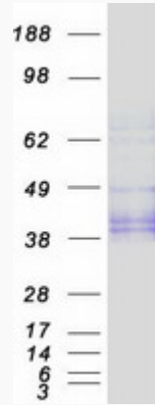
Gene Name	OGN osteoglycin [Homo sapiens (human)]
Official Symbol	OGN
Synonyms	OGN; osteoglycin; osteoglycin (osteoinductive factor); mimecan; mimecan proteoglycan; OIF; SLRR3A; osteoinductive factor; corneal keratan sulfate proteoglycan; OG; DKFZp586P2421;
Gene ID	4969
mRNA Refseq	NM_033014
Protein Refseq	NP_148935
MIM	602383
UniProt ID	P20774

 Tel: 1-631-559-9269 1-516-512-3133

 Email: info@creative-biomart.com  Fax: 1-631-938-8127

 45-1 Ramsey Road, Shirley, NY 11967, USA

SDS-PAGE



 Tel: 1-631-559-9269 1-516-512-3133

 Email: info@creative-biomart.com  Fax: 1-631-938-8127

 45-1 Ramsey Road, Shirley, NY 11967, USA