

## Recombinant Human OLFML3 protein, His-tagged

Cat. No. OLFML3-1453H Lot. No. (See product label)

### SPECIFICATION

<b>Product Overview</b>	Recombinant Human OLFML3 protein(57-406 aa), fused with N-terminal His tag, was expressed in E. coli.
<b>Species</b>	Human
<b>Source</b>	E.coli
<b>ProteinLength</b>	57-406 aa
<b>Tag</b>	N-His
<b>Form</b>	The purified protein was Lyophilized from sterile PBS (58mM Na <sub>2</sub> HPO <sub>4</sub> , 17mM NaH <sub>2</sub> PO <sub>4</sub> , 68mM NaCl, pH7.4). 5 % trehalose and 5 % mannitol are added as protectant before lyophilization.
<b>Purity</b>	85%, by SDS-PAGE with Coomassie Brilliant Blue staining.
<b>Storage</b>	Short-term storage: Store at 2-8°C for (1-2 weeks). Long-term storage: Aliquot and store at -20°C to -80°C for up to 3 months, reconstitution with sterile water and addition of an equal volume of glycerol. Avoid repeat freeze-thaw cycles.
<b>Reconstitution</b>	Reconstitute at 0.25 µg/µl in 200 µl sterile water for short-term storage. After reconstitution with sterile water, if glycerol has no effect on subsequent experiments, it is recommended to add an equal volume of glycerol for long-term storage.

 Tel: 1-631-559-9269 1-516-512-3133

 Email: [info@creative-biomart.com](mailto:info@creative-biomart.com)  Fax: 1-631-938-8127

 45-1 Ramsey Road, Shirley, NY 11967, USA



**AA Sequence**

DFKNKMLPLLEVAEKEREALRTEADTISGRVDRLEREVDYLETQNPALPCVEFDEKV  
TGGPGTKGKGRRNEKYDMVTDCGYTISQVRSMKILKRFGGPAGLWTKDPLGQTEKI  
YVLDGTQNDTAFVFPRLRDFTLAMAARKASRVRVFPFVWGTGQLVYGGFLYFARR  
PPGRPGGGEMENTLQLIKFHLANRTVVDSSVFPAEGLIPPYGLTADTYIDLADEE  
GLWAVYATREDDRHLCCLAKLDPQTLDTQQWDTPCPRENAEAAFVICGTLYVVYNT  
RPASRARIQCSFDASGTLTPERAALPYFPRRYGAHASLRYNPRERQLYAWDDGYQI  
VYKLEMRKKEEEV

**GENE INFORMATION**

**Gene Name** OLFML3 olfactomedin-like 3 [ Homo sapiens ]

**Official Symbol** OLFML3

**Synonyms** OLFML3; olfactomedin-like 3; olfactomedin-like protein 3; HNOEL iso; OLF44; hOLF44; HNOEL-iso;

**Gene ID** 56944

**mRNA Refseq** NM\_020190

**Protein Refseq** NP\_064575

**MIM** 610088

**UniProt ID** Q9NRN5

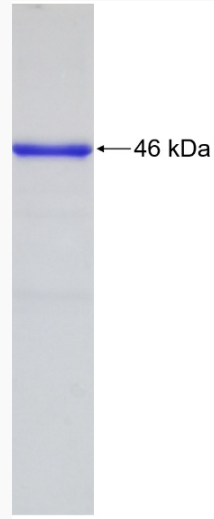
Tel: 1-631-559-9269 1-516-512-3133

Email: [info@creative-biomart.com](mailto:info@creative-biomart.com) Fax: 1-631-938-8127

45-1 Ramsey Road, Shirley, NY 11967, USA



SDS-PAGE



Tel: 1-631-559-9269 1-516-512-3133

Email: [info@creative-biomart.com](mailto:info@creative-biomart.com) Fax: 1-631-938-8127

45-1 Ramsey Road, Shirley, NY 11967, USA