

Recombinant Full Length Human OLIG2 Protein, C-Flag-tagged

Cat. No. OLIG2-1769HFL Lot. No. (See product label)

SPECIFICATION

Product Overview Recombinant Full Length Human OLIG2 Protein, fused to Flag-tag at C-terminus, was expressed in Mammalian cells.

Species Human

Source Mammalian Cells

Description This gene encodes a basic helix-loop-helix transcription factor which is expressed in oligodendroglial tumors of the brain. The protein is an essential regulator of ventral neuroectodermal progenitor cell fate. The gene is involved in a chromosomal translocation t(14;21)(q11.2;q22) associated with T-cell acute lymphoblastic leukemia. Its chromosomal location is within a region of chromosome 21 which has been suggested to play a role in learning deficits associated with Down syndrome.

Form 25 mM Tris HCl, pH 7.3, 100 mM glycine, 10% glycerol.

Molecular Mass 32.2 kDa

AA Sequence

```

MDSASLVSSRPSSPEPDDLFLPARSKGSSGSAFTGGTVSSSTPSCDPELSAELR
GAMGSAGAHPGDKL GGSGFKXSSSSTSSSTSSAAASSTKKDKKQMTPELQQLRL
KINSRERKRMHDLNIAMDGLREVMPYAHG PSVRKLSKIATLLLARNYILMLTNSLEE
MKRLVSEIYGGHHAGFHPSACGGLAHSAPLPAATAHPAAAAH AAHHPAVHHPILPP
AAAAAAAAAAAAAVSSASLPGSGLPSVGSIRPPHGLLKSPSAAAAAAPLGGGGGGSG
ASGGFQHWGGMPCPCSMCQVPPPHHHVSAMGAGSLPRLTSDAK TRTRPLEQKLI
SEEDLAANDILDYKDDDDKV
    
```

 Tel: 1-631-559-9269 1-516-512-3133

 Email: info@creative-biomart.com  Fax: 1-631-938-8127

 45-1 Ramsey Road, Shirley, NY 11967, USA

Purity	> 80% as determined by SDS-PAGE and Coomassie blue staining.
Stability	Stable for 12 months from the date of receipt of the product under proper storage and handling conditions. Avoid repeated freeze-thaw cycles.
Storage	Store at -80 centigrade.
Concentration	>50 ug/mL as determined by microplate BCA method.
Preparation	Recombinant protein was captured through anti-DDK affinity column followed by conventional chromatography steps.
Protein Families	Druggable Genome, Transcription Factors
Full Length	Full L.

GENE INFORMATION

Gene Name	OLIG2 oligodendrocyte transcription factor 2 [Homo sapiens (human)]
Official Symbol	OLIG2
Synonyms	BHLHB1; OLIGO2; RACK17; PRKCBP2; bHLHe19
Gene ID	10215
mRNA Refseq	NM_005806.4
Protein Refseq	NP_005797
MIM	606386

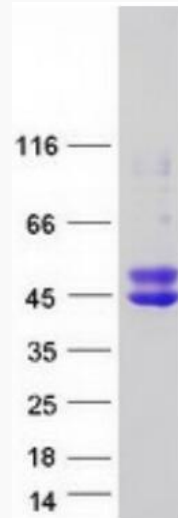
 Tel: 1-631-559-9269 1-516-512-3133

 Email: info@creative-biomart.com  Fax: 1-631-938-8127

 45-1 Ramsey Road, Shirley, NY 11967, USA

UniProt ID

Q13516



Coomassie blue staining of purified OLIG2 protein.

 Tel: 1-631-559-9269 1-516-512-3133

 Email: info@creative-biomart.com  Fax: 1-631-938-8127

 45-1 Ramsey Road, Shirley, NY 11967, USA