

Recombinant Human OLR1 protein(61-150 aa), C-His-tagged

Cat. No. OLR1-2808H Lot. No. (See product label)

SPECIFICATION

Product Overview	Recombinant Human OLR1 protein(P78380)(61-150 aa), fused with C-terminal His tag, was expressed in E. coli.
Species	Human
Source	E.coli
ProteinLength	61-150 aa
Form	0.15 M Phosphate buffered saline
Molecular Mass	12 kDa
Storage	Shipped on dry ice. Avoid repeated freeze-thaw cycles. Upon receipt, 2 days when stored at 2 to 8 °C after thawing. Up to 12 months when aliquoted and stored at -20 to -80°C.
Reconstitution	It is recommended that sterile water be added to the vial to prepare a stock solution of 0.2 ug/ul. Centrifuge the vial at 4°C before opening to recover the entire contents.
AA Sequence	SQVSDLLTQEQLNLTHQKKKLEGQISARQQAEEASQSENELKEMIETLARKLNEKS KEQMELHHQNLNLQETLKRVANCSAPCPQDWIW

GENE INFORMATION

 Tel: 1-631-559-9269 1-516-512-3133

 Email: info@creative-biomart.com  Fax: 1-631-938-8127

 45-1 Ramsey Road, Shirley, NY 11967, USA

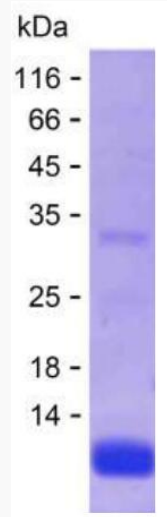
Gene Name	OLR1 oxidized low density lipoprotein (lectin-like) receptor 1 [Homo sapiens]
Official Symbol	OLR1
Synonyms	OLR1; oxidized low density lipoprotein (lectin-like) receptor 1; oxidised low density lipoprotein (lectin like) receptor 1; oxidized low-density lipoprotein receptor 1; CLEC8A; LOX 1; SCARE1; hLOX-1; ox LDL receptor 1; lectin-type oxidized LDL receptor 1; scavenger receptor class E, member 1; C-type lectin domain family 8 member A; oxidized low-density lipoprotein receptor 1, soluble form; LOX1; LOXIN; SLOX1;
Gene ID	4973
mRNA Refseq	NM_001172632
Protein Refseq	NP_001166103
MIM	602601
UniProt ID	P78380

 Tel: 1-631-559-9269 1-516-512-3133

 Email: info@creative-biomart.com  Fax: 1-631-938-8127

 45-1 Ramsey Road, Shirley, NY 11967, USA

SDS-PAGE



 Tel: 1-631-559-9269 1-516-512-3133

 Email: info@creative-biomart.com  Fax: 1-631-938-8127

 45-1 Ramsey Road, Shirley, NY 11967, USA