

Active Recombinant Full Length Human OLR1 Protein, C-Flag-tagged

Cat. No. OLR1-693HFL Lot. No. (See product label)

SPECIFICATION

Product Overview	Recombinant Full Length Human OLR1 Protein, fused to Flag-tag at C-terminus, was expressed in Mammalian cells.
Species	Human
Source	Mammalian Cells
Description	<p>This gene encodes a low density lipoprotein receptor that belongs to the C-type lectin superfamily. This gene is regulated through the cyclic AMP signaling pathway. The encoded protein binds, internalizes and degrades oxidized low-density lipoprotein.</p> <p>This protein may be involved in the regulation of Fas-induced apoptosis. This protein may play a role as a scavenger receptor. Mutations of this gene have been associated with atherosclerosis, risk of myocardial infarction, and may modify the risk of Alzheimer's disease. Alternate splicing results in multiple transcript variants.</p>
Form	25 mM Tris HCl, pH 7.3, 100 mM glycine, 10% glycerol.
Bio-activity	Binding assay
Molecular Mass	30.8 kDa
AA Sequence	MTFDDLKIQTVKDQPDEKSNKAKGLQFLYSPWWCLAAATLGVLCLGLVVTIMVL GMQLSQVSDLLTQE QANLTHQKKKLEGQISARQQAEEASQESENELKEMIETLARK LNEKSKEQMELHHQNLNLQETLKR VANC SAPCPQDWIWHGENCYLFSSGSFNWE

 Tel: 1-631-559-9269 1-516-512-3133

 Email: info@creative-biomart.com  Fax: 1-631-938-8127

 45-1 Ramsey Road, Shirley, NY 11967, USA

KSQEKCLSLDAKLLKINSTADLDFIQQAISYSSFPFWMGLSRRN
 PSYPWLWEDGSPLMPHLFRVRGAVSQTYPSTGTCAYIQRGAVYAENCILAAFSICQK
 KANLRAQTRTRPLEQKLISEEDLAANDILDYKDDDDKV

Purity	> 80% as determined by SDS-PAGE and Coomassie blue staining.
Stability	Stable for 12 months from the date of receipt of the product under proper storage and handling conditions. Avoid repeated freeze-thaw cycles.
Storage	Store at -80 centigrade.
Concentration	>50 ug/mL as determined by microplate BCA method.
Preparation	Recombinant protein was captured through anti-DDK affinity column followed by conventional chromatography steps.
Protein Families	Druggable Genome, Secreted Protein, Transmembrane
Protein Pathways	PPAR signaling pathway
Full Length	Full L.

GENE INFORMATION

Gene Name	OLR1 oxidized low density lipoprotein receptor 1 [Homo sapiens (human)]
Official Symbol	OLR1
Synonyms	LOX1; LOXIN; SLOX1; CLEC8A; SCARE1
Gene ID	4973

 Tel: 1-631-559-9269 1-516-512-3133

 Email: info@creative-biomart.com  Fax: 1-631-938-8127

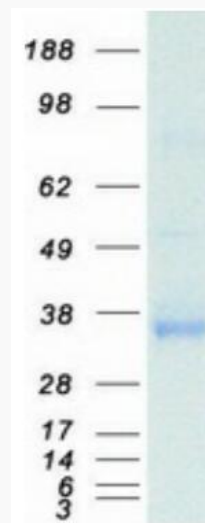
 45-1 Ramsey Road, Shirley, NY 11967, USA

mRNA Refseq [NM_002543.4](#)

Protein Refseq [NP_002534.1](#)

MIM [602601](#)

UniProt ID [P78380](#)



Coomassie blue staining of purified OLR1 protein.

 Tel: 1-631-559-9269 1-516-512-3133

 Email: info@creative-biomart.com  Fax: 1-631-938-8127

 45-1 Ramsey Road, Shirley, NY 11967, USA