

## Recombinant Human OMA1 protein, His-tagged

Cat. No. OMA1-1417H Lot. No. (See product label)

### SPECIFICATION

<b>Product Overview</b>	Recombinant Human OMA1 protein(23-278 aa), fused with N-terminal His tag, was expressed in E. coli.
<b>Species</b>	Human
<b>Source</b>	E.coli
<b>ProteinLength</b>	23-278 aa
<b>Form</b>	The purified protein was Lyophilized from sterile PBS (58mM Na <sub>2</sub> HPO <sub>4</sub> , 17mM NaH <sub>2</sub> PO <sub>4</sub> , 68mM NaCl, pH7.4). 5 % trehalose and 5 % mannitol are added as protectant before lyophilization. The elution buffer contain 300mM imidazole.
<b>Storage</b>	Short-term storage: Store at 2-8°C for (1-2 weeks). Long-term storage: Aliquot and store at -20°C to -80°C for up to 3 months, reconstitution with sterile water and addition of an equal volume of glycerol. Avoid repeat freeze-thaw cycles.
<b>Purity</b>	95%, by SDS-PAGE with Coomassie Brilliant Blue staining.

### GENE INFORMATION

<b>Official Symbol</b>	OMA1
<b>Synonyms</b>	OMA1; OMA1 zinc metallopeptidase homolog (S. cerevisiae); metalloendopeptidase OMA1, mitochondrial; FLJ33782; MPRP 1; overlapping activity with M AAA protease;

 Tel: 1-631-559-9269 1-516-512-3133

 Email: [info@creative-biomart.com](mailto:info@creative-biomart.com)  Fax: 1-631-938-8127

 45-1 Ramsey Road, Shirley, NY 11967, USA

YKR087C; ZMPOMA1; metalloprotease related protein 1; metalloprotease-related protein 1; OMA1 homolog, zinc metallopeptidase; overlapping activity with M-AAA protease; DAB1; MPRP-1; 2010001O09Rik;

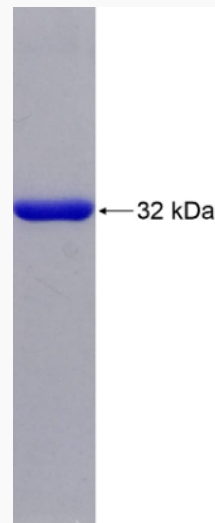
**Gene ID** 115209

**mRNA Refseq** NM\_145243

**Protein Refseq** NP\_660286

**UniProt ID** Q96E52

**SDS-PAGE**



 Tel: 1-631-559-9269 1-516-512-3133

 Email: [info@creative-biomart.com](mailto:info@creative-biomart.com)  Fax: 1-631-938-8127

 45-1 Ramsey Road, Shirley, NY 11967, USA