

Recombinant Human OMA1 protein, His-tagged

Cat. No. OMA1-1456H Lot. No. (See product label)

SPECIFICATION

Product Overview	Recombinant Human OMA1 protein(361-524 aa), fused with N-terminal His tag, was expressed in E. coli.
Species	Human
Source	E.coli
ProteinLength	361-524 aa
Form	The purified protein was Lyophilized from sterile PBS (58mM Na ₂ HPO ₄ , 17mM NaH ₂ PO ₄ , 68mM NaCl, pH7.4). 5 % trehalose and 5 % mannitol are added as protectant before lyophilization. The elution buffer contain 300mM imidazole.
Storage	Short-term storage: Store at 2-8°C for (1-2 weeks). Long-term storage: Aliquot and store at -20°C to -80°C for up to 3 months, reconstitution with sterile water and addition of an equal volume of glycerol. Avoid repeat freeze-thaw cycles.
Purity	85%, by SDS-PAGE with Coomassie Brilliant Blue staining.

GENE INFORMATION

Official Symbol	OMA1
Synonyms	OMA1; OMA1 zinc metallopeptidase homolog (S. cerevisiae); metalloendopeptidase OMA1, mitochondrial; FLJ33782; MPRP 1; overlapping activity with M AAA protease;

 Tel: 1-631-559-9269 1-516-512-3133

 Email: info@creative-biomart.com  Fax: 1-631-938-8127

 45-1 Ramsey Road, Shirley, NY 11967, USA



YKR087C; ZMPOMA1; metalloprotease related protein 1; metalloprotease-related protein 1; OMA1 homolog, zinc metallopeptidase; overlapping activity with M-AAA protease; DAB1; MPRP-1; 2010001O09Rik;

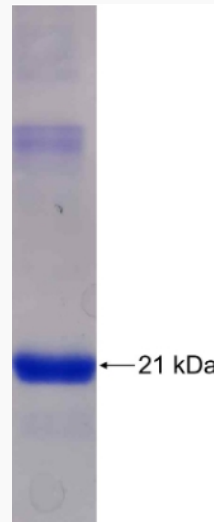
Gene ID 115209

mRNA Refseq NM_145243

Protein Refseq NP_660286

UniProt ID Q96E52

SDS-PAGE



Tel: 1-631-559-9269 1-516-512-3133

Email: info@creative-biomart.com Fax: 1-631-938-8127

45-1 Ramsey Road, Shirley, NY 11967, USA