

Recombinant Human OMA1 Protein, GST-tagged

Cat. No. OMA1-1457H Lot. No. (See product label)

SPECIFICATION

Product Overview	Human OMA1 full-length ORF (NP_660286.1, 1 a.a. - 524 a.a.) recombinant protein with GST-tag at N-terminal was expressed in Wheat Germ.
Species	Human
Source	Wheat Germ
Description	Metalloprotease that is part of the quality control system in the inner membrane of mitochondria. Following stress conditions that induce loss of mitochondrial membrane potential, mediates cleavage of OPA1 at S1 position, leading to OPA1 inactivation and negative regulation of mitochondrial fusion. May also cleave UQCC3 under these conditions. Its role in mitochondrial quality control is essential for regulating lipid metabolism as well as to maintain body temperature and energy expenditure under cold-stress conditions.
Molecular Mass	86.5 kDa
AA Sequence	MSFICGLQSAARNHVFFRFNSLSNWRKCNTLASTSRGCHQVQVNHIVNKYQGLGV NQCDRWSFLPGNFHFYSTFNKRTGGLSSTKSKEIWRITSKCTVWINDAFSRQLLIKE VTAVPSLSVLHPLSPASIRAIRNFHTSPRFQAAPVPLLLMILKPVQKLFIIIVGRGIRKW WQALPPNKKEVVKENIRKNKWKLFLGLSSFGLLFVVFYFTHLEVSPITGRSKLLLLGK EQFRLLSELEYEAWMEEFKNDMLTEKDARYLAVKEVLCHLIECNKDVPGISQINWVI HVVDSPIIINAFVLPNGQMFVFTGFLNSVTDIHQLSFLLGHEIAHAVLGHAAEKAGMVH LLDFLGMIFLTIWAICPRDSLALLCQWIQSKLQEYMFNRPYSRKLEAEADKIGLLAA

 Tel: 1-631-559-9269 1-516-512-3133

 Email: info@creative-biomart.com  Fax: 1-631-938-8127

 45-1 Ramsey Road, Shirley, NY 11967, USA

KACADIRASSVFWQQMEFVDSLHGQPKMPEWLSTHPSHGNRVEYLDRLIPQALKIR
EMCNCPLSNPDRLLFKLSTKHFLEESEKEDLNITKKQKMDTLPIQKQEIQPLTYIVE
KRTGS

Applications	Enzyme-linked Immunoabsorbent Assay Western Blot (Recombinant protein) Antibody Production Protein Array
Notes	Best use within three months from the date of receipt of this protein.
Storage	Store at -80 centigrade. Aliquot to avoid repeated freezing and thawing.
Storage Buffer	50 mM Tris-HCl, 10 mM reduced Glutathione, pH=8.0 in the elution buffer.

GENE INFORMATION

Gene Name	OMA1 OMA1 zinc metallopeptidase [Homo sapiens (human)]
Official Symbol	OMA1
Synonyms	OMA1; OMA1 zinc metallopeptidase; DAB1; MPRP1; MPRP-1; YKR087C; ZMPOMA1; peptidase; 2010001O09Rik; metalloendopeptidase OMA1, mitochondrial; OMA1 homolog, zinc metallopeptidase; OMA1 zinc metallopeptidase homolog; metalloprotease-related protein 1; overlapping activity with M-AAA protease; overlapping with the m-AAA protease 1 homolog; zinc metallopeptidase OMA1
Gene ID	115209
mRNA Refseq	NM_145243

 Tel: 1-631-559-9269 1-516-512-3133

 Email: info@creative-biomart.com  Fax: 1-631-938-8127

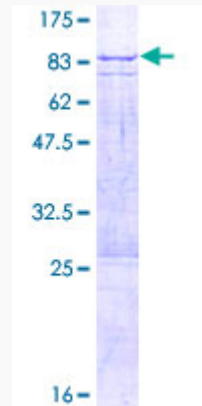
 45-1 Ramsey Road, Shirley, NY 11967, USA

Protein Refseq NP_660286

MIM 617081

UniProt ID Q96E52

**Quality Control
Testing**



12.5% SDS-PAGE Stained with Coomassie Blue.

 Tel: 1-631-559-9269 1-516-512-3133

 Email: info@creative-biomart.com  Fax: 1-631-938-8127

 45-1 Ramsey Road, Shirley, NY 11967, USA