

Active Recombinant Human OMA1 Full Length Transmembrane protein, His-SUMO-tagged

Cat. No. OMA1-231H Lot. No. (See product label)

SPECIFICATION

Product Overview	Recombinant Human OMA1 protein(Q96E52)(14-524aa), fused with N-terminal His-SUMO tag, was expressed in in vitro E. coli expression system.
Species	Human
Source	E.coli
ProteinLength	14-524aa
Form	<p>If the delivery form is liquid, the default storage buffer is Tris/PBS-based buffer, 5%-50% glycerol.</p> <p>If the delivery form is lyophilized powder, the buffer before lyophilization is Tris/PBS-based buffer, 6% Trehalose, pH 8.0.</p>
Bio-activity	Measured by its binding ability in a functional ELISA. Immobilized OMA1 at 5 µg/ml can bind human BZW2, the EC50 of human BZM2 is 45.42-72.22 µg/ml.
Molecular Mass	74.7kDa
AA Sequence	<p>HVFFRFNLSLSNWRKCNTLASTSRGCHQVQVNHIVNKYQGLGVNQCDRWSFLPGNF HFYSTFNKRTGGLSSTKSKEIWRITSKCTVWINDAFSRQLLIKEVTAVPSLSVLHPLS PASIRAIRNFHTSPRFQAAPVPLLLMILKPVQKLFIIIVGRGIRKWWQALPPNKKEVVK ENIRKNKWKLFLGLSSFGLLFVVFYFTHLEVSPITGRSKLLLLGKEQFRLLELEYEA WMEEFKNDMLTEKDARYLAVKEVLCHLIECNKDVPGISQINWVIHVVDSPINAFVLP</p>

 Tel: 1-631-559-9269 1-516-512-3133

 Email: info@creative-biomart.com  Fax: 1-631-938-8127

 45-1 Ramsey Road, Shirley, NY 11967, USA

NGQMFVFTGFLNSVTDIHQLSFLLGHEIAHAVLGHAAEKAGMVHLLDFLGMIFLTMIW
 AICPRDSLALLCQWIQSKLQEYMFNRPYSRKLEAEADKIGLLAAKACADIRASSVFW
 QQMEFVDSLHGQPKMPEWLSTHPSHG NRVEYLDRLIPQALKIREMCNCPPLSNPDP
 RLLFKLSTKHFLEESEKEDLNITKKQKMDTLPIQKQEIQIPLTYIVEKRTGS

Purity Greater than 90% as determined by SDS-PAGE.

Storage Store at -20°C/-80°C upon receipt, aliquoting is necessary for mutiple use. Avoid repeated freeze-thaw cycles.

Reconstitution Please reconstitute protein in deionized sterile water to a concentration of 0.1-1.0 mg/mL. We recommend to add 5-50% of glycerol (final concentration) and aliquot for long-term storage at -20°C/-80°C.

GENE INFORMATION

Gene Name OMA1 OMA1 zinc metallopeptidase homolog (*S. cerevisiae*) [*Homo sapiens*]

Official Symbol OMA1

Synonyms OMA1; OMA1 zinc metallopeptidase homolog (*S. cerevisiae*); metalloendopeptidase OMA1, mitochondrial; FLJ33782; MPRP 1; overlapping activity with M AAA protease; YKR087C; ZMPOMA1; metalloprotease related protein 1; metalloprotease-related protein 1; OMA1 homolog, zinc metallopeptidase; overlapping activity with M-AAA protease; DAB1; MPRP-1; 2010001O09Rik;

Gene ID 115209

mRNA Refseq NM_145243

Protein Refseq NP_660286

 Tel: 1-631-559-9269 1-516-512-3133

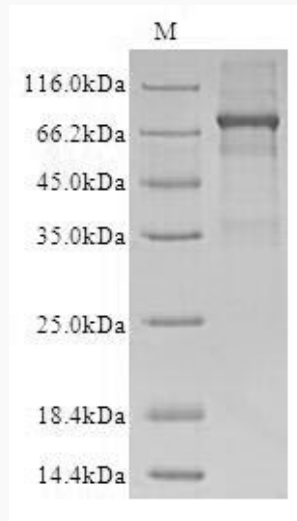
 Email: info@creative-biomart.com  Fax: 1-631-938-8127

 45-1 Ramsey Road, Shirley, NY 11967, USA

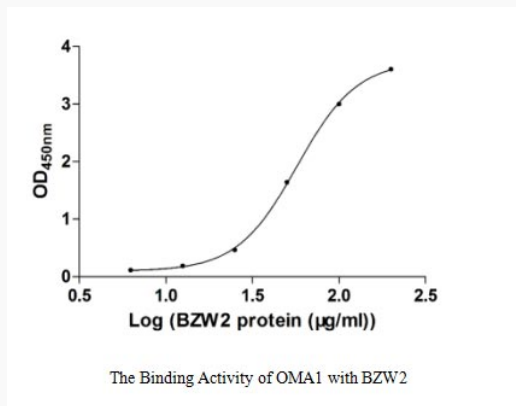
UniProt ID

Q96E52

SDS-PAGE



Activity



 Tel: 1-631-559-9269 1-516-512-3133

 Email: info@creative-biomart.com  Fax: 1-631-938-8127

 45-1 Ramsey Road, Shirley, NY 11967, USA