

Recombinant Human OMG protein, His tagged

Cat. No. OMG-012H Lot. No. (See product label)

SPECIFICATION

Product Overview	Recombinant human OMG, fused to His-tag at C-terminus, was expressed in insect cell and purified by using conventional chromatography techniques.
Species	Human
Source	Insect Cells
ProteinLength	25-417aa
Description	Predicted to enable identical protein binding activity. Predicted to be involved in neuron projection regeneration. Predicted to act upstream of or within regulation of collateral sprouting of intact axon in response to injury. Predicted to be located in plasma membrane.
Form	Liquid
AASequence	ICPLQCICTERHRHVDCSGRNLSTLP SGLQENIIHLNLSYNHFTDLHNQLTQYTNLRT LDISNNRLES LPAHLPRSLWNMSAANNNIKLLDKSDTAYQWNLYLDVSKNMLEKVV LIKNTLRSLEVLNLSSNKLWTVPTNMP SKLHIVDLSNNSLTQILPGTLINLNLTHLYLH NNKFTFIPDQSFDQLFQLQEITLYNNRWSCDHKQ NITYLLKWM METKAHVIGTPCST QISSLKEHNMYPTPSGFTSSLFTVSGMQTVDTINSL SVVTQPKVTKIPKQYRTKETF GATLSKDTTFTSTDKAFVPY PEDTSTETINSHEAAAATLTIHLQDGMVTNTSLTSSTK SSPTPMTLSITSGMPNNFSEMPQQSTLNLWREETTTNVKTPLPS
Molecular Mass	45.4 kDa (401aa)

 Tel: 1-631-559-9269 1-516-512-3133

 Email: info@creative-biomart.com  Fax: 1-631-938-8127

 45-1 Ramsey Road, Shirley, NY 11967, USA

Endotoxin	< 1 EU/μg of protein (determined by LAL method)
Purity	> 95% by SDS-PAGE
Application	SDS-PAGE
Storage	Can be stored at +2 to +8 centigrade for 1 week. For long term storage, aliquot and store at -20 to -80 centigrade. Avoid repeated freezing and thawing cycles.
Storage Buffer	Phosphate-Buffered Saline (pH 7.4) containing 10% glycerol
Concentration	0.5 mg/mL (determined by absorbance at 280nm)
Reference	1. Kottis V., et al. (2002) J Neurochem. 82:1566-1569. 2. Habib AA., et al. (1998) J Neurochem. 70:1704-1711

GENE INFORMATION

Gene Name	OMG oligodendrocyte myelin glycoprotein [Homo sapiens (human)]
Official Symbol	OMG
Synonyms	OMG; oligodendrocyte myelin glycoprotein; OMGP; oligodendrocyte-myelin glycoprotein
Gene ID	4974
mRNA Refseq	NM_002544
Protein Refseq	NP_002535

 Tel: 1-631-559-9269 1-516-512-3133

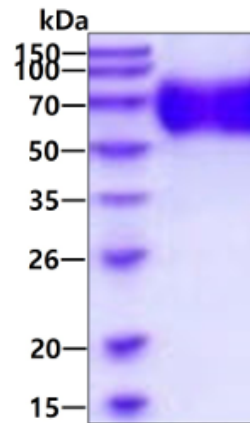
 Email: info@creative-biomart.com  Fax: 1-631-938-8127

 45-1 Ramsey Road, Shirley, NY 11967, USA

MIM 164345

UniProt ID P23515

SDS-PAGE and WB



 Tel: 1-631-559-9269 1-516-512-3133

 Email: info@creative-biomart.com  Fax: 1-631-938-8127

 45-1 Ramsey Road, Shirley, NY 11967, USA