

Recombinant Human OMG protein, His-tagged

Cat. No. OMG-3824H **Lot. No.** (See product label)

SPECIFICATION

Product Overview	Recombinant Human OMG protein (Ile25-Asn420) was fused to His-tag at C-terminus and expressed in human 293 cells (HEK293).
Species	Human
Source	HEK293
ProteinLength	Ile25-Asn420
Description	Oligodendrocyte-myelin glycoprotein (OMG or OMGP), is a cell membrane protein which contains eight LRR (leucine-rich) repeats and one LRRNT domain. OMG/OMGP is a glycosylphosphatidylinositol-anchored protein expressed by neurons and oligodendrocytes in the central nervous system (CNS). OMG/OMGP play roles in both the developing and adult central nervous system. OMG/OMGP may also be involved in the formation and maintenance of myelin sheaths.
Predicted N Terminal	Ile 25
Form	Lyophilized from 0.22 µm filtered solution in PBS, pH7.4, 10% trehalose.
Molecular Mass	The protein has a calculated MW of 45.5 kDa. The protein migrates as 90-120 kDa under reducing (R) condition (SDS-PAGE) due to glycosylation.
Endotoxin	Less than 1.0 EU per µg by the LAL method.

 Tel: 1-631-559-9269 1-516-512-3133

 Email: info@creative-biomart.com  Fax: 1-631-938-8127

 45-1 Ramsey Road, Shirley, NY 11967, USA

Purity	>92% as determined by SDS-PAGE.
Storage	<p>For long term storage, the product should be stored at lyophilized state at -20 centigrade or lower.</p> <p>Please avoid repeated freeze-thaw cycles.</p> <p>This product is stable after storage at:</p> <p>-20 to -70 centigrade for 12 months in lyophilized state; -70 centigrade for 3 months under sterile conditions after reconstitution.</p>
Reconstitution	It is recommended that sterile water be added to the vial to prepare a stock solution of 0.2 ug/ul. Centrifuge the vial at 4°C before opening to recover the entire contents.

GENE INFORMATION

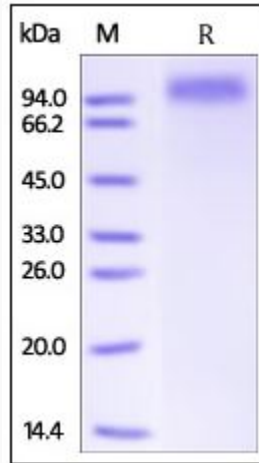
Gene Name	OMG
Official Symbol	OMG
Synonyms	OMGP
Gene ID	4974
mRNA Refseq	NM_002544.5
Protein Refseq	NP_002535.3
MIM	164345
UniProt ID	P23515

 Tel: 1-631-559-9269 1-516-512-3133

 Email: info@creative-biomart.com  Fax: 1-631-938-8127

 45-1 Ramsey Road, Shirley, NY 11967, USA

**SDS-PAGE of OMG-
3824H**



Human OMgp, His Tag on SDS-PAGE under reducing (R) condition. The gel was stained overnight with Coomassie Blue. The purity of the protein is greater than 92%.

 Tel: 1-631-559-9269 1-516-512-3133

 Email: info@creative-biomart.com  Fax: 1-631-938-8127

 45-1 Ramsey Road, Shirley, NY 11967, USA