

# Recombinant Salmonella Typhi OMPA Protein (27-349 aa), His-tagged

Cat. No. OMPA-1292S    Lot. No. (See product label)

## SPECIFICATION

<b>Product Overview</b>	Recombinant Salmonella Typhi OMPA Protein (27-349 aa) is produced by E. coli expression system. This protein is fused with a 6xHis tag at the N-terminal. Protein Description: Partial.
<b>Species</b>	Salmonella Typhi
<b>Source</b>	E.coli
<b>ProteinLength</b>	27-349 aa
<b>Description</b>	Required for the action of colicins K and L and for the stabilization of mating aggregates in conjugation. Serves as a receptor for a number of T-even like phages. Also acts as a porin with low permeability that allows slow penetration of small solutes.
<b>Form</b>	Tris-based buffer,50% glycerol
<b>Molecular Mass</b>	38.9 kDa
<b>AA Sequence</b>	TWYAGAKLGWSQYHDTGFIHNDGPTHENQLGAGAFGGYQVNPYVGFEMGYDWLG RMPYKGDNTNGAYKAQGVQLTAKLGYPTDDLDVYTRLGGMVWRADTKSNVPGGA STKDHDTGVSPVFAGGIEYAITPEIATRLEYQWTNNIGDANTIGTRPDNGLLSVGVSY RFGQQEAAPVVAPAPAPAPEVQTKHFTLKSDFLNFNKSTLKPEGQQALDQLYSQL SNLDPKDGSSVVVLGFTDRIGSDAYNQGLSEKRAQSVVDYLISKGIPSDKISARGMGE

 Tel: 1-631-559-9269    1-516-512-3133

 Email: [info@creative-biomart.com](mailto:info@creative-biomart.com)     Fax: 1-631-938-8127

 45-1 Ramsey Road, Shirley, NY 11967, USA

SNPVTGNTCDNVKPRAALIDCLAPDRRVEIEVKGVKDVVTQPQ

**Purity** > 90% as determined by SDS-PAGE.

**Notes** Repeated freezing and thawing is not recommended. Store working aliquots at 4 centigrade for up to one week.

**Storage** The shelf life is related to many factors, storage state, buffer ingredients, storage temperature and the stability of the protein itself. Generally, the shelf life of liquid form is 6 months at -20 centigrade/-80 centigrade. The shelf life of lyophilized form is 12 months at -20 centigrade/-80 centigrade.

**Concentration** A hardcopy of COA with reconstitution instruction is sent along with the products. Please refer to it for detailed information.

## GENE INFORMATION

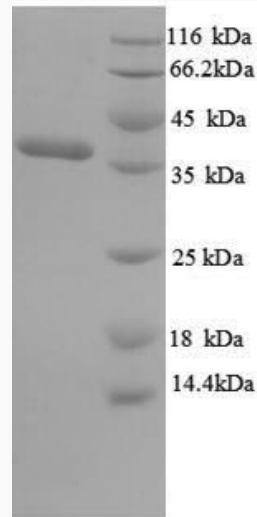
**Synonyms** ompA;

**UniProt ID** [Q8Z7S0](https://www.uniprot.org/entry/Q8Z7S0)

 Tel: 1-631-559-9269 1-516-512-3133

 Email: [info@creative-biomart.com](mailto:info@creative-biomart.com)  Fax: 1-631-938-8127

 45-1 Ramsey Road, Shirley, NY 11967, USA



(Tris-Glycine gel) Discontinuous SDS-PAGE (reduced) with 5% enrichment gel and 15% separation gel.

 Tel: 1-631-559-9269 1-516-512-3133

 Email: [info@creative-biomart.com](mailto:info@creative-biomart.com)  Fax: 1-631-938-8127

 45-1 Ramsey Road, Shirley, NY 11967, USA