

# Recombinant Escherichia coli OMPF Protein (23-362 aa), His-Myc-tagged

Cat. No. OMPF-2619E Lot. No. (See product label)

## SPECIFICATION

**Product Overview** Recombinant Escherichia coli (strain K12) OMPF Protein (23-362 aa) is produced by E. coli expression system. This protein is fused with a 10xHis tag at the N-terminal and a Myc tag at the C-terminal. Protein Description: Full Length of Mature Protein.

**Species** E.coli

**Source** E.coli

**ProteinLength** 23-362 aa

**Form** Tris-based buffer,50% glycerol

**Molecular Mass** 44.1 kDa

**AA Sequence**  
 AEIYNKDGNKVDLYGKAVGLHYFSKNGENSYGGNGDMTYARLGFKGETQINSDLT  
 GYGQWEYNFQGNNSEGADAQTGNKTRLAFAGLKYADVGSFDYGRNYGVVYDALG  
 YTDMLPEFGGDTAYSDDFFVGRVGGVATYRNSNFFGLVDGLNFAVQYLGKNERDT  
 ARRSNGDGVGGSISYEYEGFGIVGAYGAADRNLQEAQPLGNGKKAQWATGLKY  
 DANNIYLAANYGETRNATPITNKFTNTSGFANKTQDVLLVAQYQDFGLRPSIAYTKS  
 KAKDVEGIGDVLVNYFEVGATYYFNKNMSTYVDYIINQIDSDNKLGVGSDDTVAVGI  
 VYQF

**Purity** > 85% as determined by SDS-PAGE.

 Tel: 1-631-559-9269 1-516-512-3133

 Email: [info@creative-biomart.com](mailto:info@creative-biomart.com)  Fax: 1-631-938-8127

 45-1 Ramsey Road, Shirley, NY 11967, USA

<b>Notes</b>	Repeated freezing and thawing is not recommended. Store working aliquots at 4 centigrade for up to one week.
<b>Storage</b>	The shelf life is related to many factors, storage state, buffer ingredients, storage temperature and the stability of the protein itself. Generally, the shelf life of liquid form is 6 months at -20 centigrade/-80 centigrade. The shelf life of lyophilized form is 12 months at -20 centigrade/-80 centigrade.
<b>Concentration</b>	A hardcopy of COA will be sent along with the products. Please refer to it for detailed information.

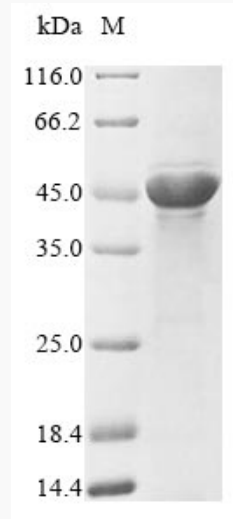
## GENE INFORMATION

<b>Gene Name</b>	<a href="#">ompF outer membrane porin F [ Escherichia coli str. K-12 substr. MG1655 ]</a>
<b>Official Symbol</b>	<a href="#">OMPF</a>
<b>Synonyms</b>	<a href="#">ompF</a> ; <a href="#">cmIB</a> ; <a href="#">cry</a> ; <a href="#">ECK0920</a> ; <a href="#">nfxB</a> ; <a href="#">tolF</a> ;
<b>Gene ID</b>	<a href="#">945554</a>
<b>Protein Refseq</b>	<a href="#">NP_415449</a>
<b>UniProt ID</b>	<a href="#">P02931</a>

 Tel: 1-631-559-9269 1-516-512-3133

 Email: [info@creative-biomart.com](mailto:info@creative-biomart.com)  Fax: 1-631-938-8127

 45-1 Ramsey Road, Shirley, NY 11967, USA



(Tris-Glycine gel) Discontinuous SDS-PAGE (reduced) with 5% enrichment gel and 15% separation gel.

 Tel: 1-631-559-9269 1-516-512-3133

 Email: [info@creative-biomart.com](mailto:info@creative-biomart.com)  Fax: 1-631-938-8127

 45-1 Ramsey Road, Shirley, NY 11967, USA