

Recombinant Full Length Human ONECUT1 Protein, His&GST tagged

Cat. No. ONECUT1-23HFL **Lot. No.** (See product label)

SPECIFICATION

Product Overview	Purified recombinant protein of Human one cut homeobox 1 (ONECUT1), full length, with N-terminal GST and C-terminal His tag, expressed in E.coli.
Species	Human
Source	E.coli
ProteinLength	1-465aa
Description	This gene encodes a member of the Cut homeobox family of transcription factors. Expression of the encoded protein is enriched in the liver, where it stimulates transcription of liver-expressed genes, and antagonizes glucocorticoid-stimulated gene transcription. This gene may influence a variety of cellular processes including glucose metabolism, cell cycle regulation, and it may also be associated with cancer. Alternative splicing results in multiple transcript variants.
Tag	N-GST and C-His
Molecular Mass	50.8 kDa
Purity	> 80% as determined by SDS-PAGE and Coomassie blue staining
Notes	For testing in cell culture applications, please filter before use. Note that you may experience some loss of protein during the filtration process.

 Tel: 1-631-559-9269 1-516-512-3133

 Email: info@creative-biomart.com  Fax: 1-631-938-8127

 45-1 Ramsey Road, Shirley, NY 11967, USA

Stability	Stable for 12 months from the date of receipt of the product under proper storage and handling conditions. Avoid repeated freeze-thaw cycles.
Storage	Store at -80 centigrade after receiving vials.
Storage Buffer	50 mM Tris-HCl, pH 8.0, 8 M urea
Concentration	>0.05 µg/µL as determined by microplate BCA method.

GENE INFORMATION

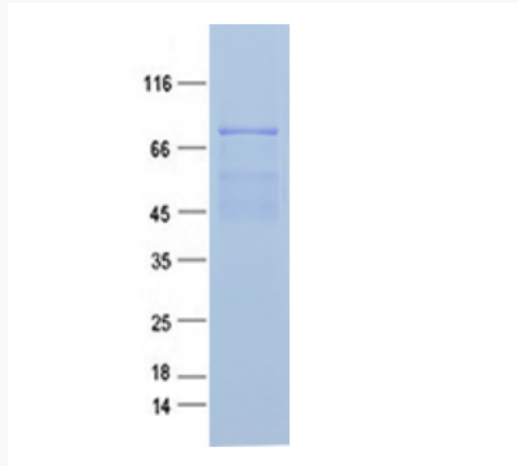
Gene Name	ONECUT1 one cut homeobox 1 [Homo sapiens (human)]
Official Symbol	ONECUT1
Synonyms	ONECUT1; one cut homeobox 1; HNF6, HNF6A, one cut domain, family member 1; hepatocyte nuclear factor 6; HNF 6; one cut domain family member 1; one cut domain, family member 1; hepatocyte nuclear factor 6, alpha; HNF6; HNF-6; HNF6A
Gene ID	3175
mRNA Refseq	NM_004498
Protein Refseq	NP_004489
MIM	604164
UniProt ID	Q9UBC0

 Tel: 1-631-559-9269 1-516-512-3133

 Email: info@creative-biomart.com  Fax: 1-631-938-8127

 45-1 Ramsey Road, Shirley, NY 11967, USA

SDS-PAGE



Purified recombinant protein ONECUT1 was analyzed by SDS-PAGE gel and Coomossie Blue Staining.

 Tel: 1-631-559-9269 1-516-512-3133

 Email: info@creative-biomart.com  Fax: 1-631-938-8127

 45-1 Ramsey Road, Shirley, NY 11967, USA