

Recombinant Full Length Human optic atrophy 1 (autosomal dominant) Protein, Flag tagged

Cat. No. OPA1-23HFL Lot. No. (See product label)

SPECIFICATION

Product Overview	Recombinant protein of human optic atrophy 1 (autosomal dominant) (OPA1), nuclear gene encoding mitochondrial protein, transcript variant 3 with C-Myc/DDK tag was expressed in HEK293.
Species	Human
Source	HEK293
ProteinLength	1-960aa
Description	The protein encoded by this gene is a nuclear-encoded mitochondrial protein with similarity to dynamin-related GTPases. The encoded protein localizes to the inner mitochondrial membrane and helps regulate mitochondrial stability and energy output. This protein also sequesters cytochrome c. Mutations in this gene have been associated with optic atrophy type 1, which is a dominantly inherited optic neuropathy resulting in progressive loss of visual acuity, leading in many cases to legal blindness.
Tag	C-Flag
Molecular Mass	109.2 kDa
AA Sequence	MWRLRRAAVACEVCQSLVKHSSGIKGSPLQKLHLVSRSIYHSHHPTLKLQRPQLRT SFQQFSSLTNLPLRKLKLFSPIKYGYQPRRNFWPARLATRLLKLRYLILGSAVGGGYTA KKTFDQWKDMIPDLSEYKWIVPDIVWEIDEYIDFGHKLKLVSEVIGASDLLLLLLGSPEETA

 Tel: 1-631-559-9269 1-516-512-3133

 Email: info@creative-biomart.com  Fax: 1-631-938-8127

 45-1 Ramsey Road, Shirley, NY 11967, USA

FRATDRGSESDKHFRKVSDKEKIDQLQEELLHTQLKYQRILERLEKENKELRKLVLQ
 KDDKGIHHRKLLKSLIDMYSEVLDVLSDYDASYNTQDHLPRVVVVGDDQSAGKTSVLE
 MIAQARIFPRGSGEMMTRSPVKVTLSEGGPHHVALFKDSSREFDLTKEEDLAALRHEI
 ELRMRKNVKEGCTVSPETISLNVKGPGLQRMVLVDLPGVINTVTSGMAPDTKETIFSI
 SKAYMQNPNAIILCIQDGSVDAERSIVTDLVSQMDPHGRRRTIFVLTKVDLAEKNVASP
 SRIQQIIEGKLFPMKALGYFAVVTGKGNSSIESIAIREYEEFFQNSKLLKTSMLKAHQ
 VTTRNLSLAVSDCFWKMVRESVEQQADSFKATRFNLETWKNYPRLRELDRLNELF
 EKAKNEILDEVISLSQVTPKHWEELQQSLWERVSTHVIENIYLPAAQTMNSGTFNTT
 VDIKQKQWTDKQLPNKAVEVAWETLQEEFSRFMTEPKGKEHDDIFDKLKEAVKEESI
 KRHKWINDFAEDSLRVIQHNALEDRSISDKQQWDAIYFMEEALQARLKDTENAIEN
 MVGPDWKKRWLYWKNRTQEQCVHNETKNELEKMLKCNEEHPAYLASDEITTVRKN
 LESRGVEVDPSLIKDTWHQVYRRHFLKTALNHCNLCRRGFYYYQRHFVDSELECND
 VVLFWRIQRMLAITANTLRQQLTNTTEVRRLEKNVKEVLEDAEDGEEKIKLLTGKRVQ
 LAEDLKKVREIQEKLDAFIEALHQEKSGPTRRRLEQKLISEEDLAANDILDYKDDDDK
 V

Purity > 80% as determined by SDS-PAGE and Coomassie blue staining

Stability Stable for 12 months from the date of receipt of the product under proper storage and handling conditions. Avoid repeated freeze-thaw cycles.

Storage Store at -80 centigrade.

Concentration > 0.1 µg/µL as determined by microplate BCA method

Storage Buffer 25 mM Tris-HCl, 100 mM glycine, pH 7.3, 10% glycerol

Notes For testing in cell culture applications, please filter before use. Note that you may experience some loss of protein during the filtration process.

 Tel: 1-631-559-9269 1-516-512-3133

 Email: info@creative-biomart.com  Fax: 1-631-938-8127

 45-1 Ramsey Road, Shirley, NY 11967, USA

GENE INFORMATION

Gene Name OPA1 optic atrophy 1 (autosomal dominant) [Homo sapiens (human)]

Official Symbol OPA1

Synonyms OPA1; optic atrophy 1 (autosomal dominant); dynamin-like 120 kDa protein, mitochondrial; dynamin like guanosine triphosphatase; FLJ12460; KIAA0567; MGM1; mitochondrial dynamin like GTPase; NPG; NTG; optic atrophy protein 1; mitochondrial dynamin-like GTPase; dynamin-like guanosine triphosphatase; mitochondrial dynamin-like 120 kDa protein; largeG;

Gene ID 4976

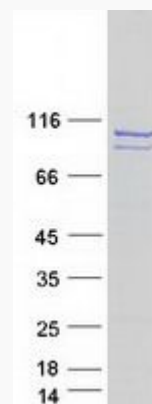
mRNA Refseq NM_130832

Protein Refseq NP_570845

MIM 605290

UniProt ID O60313

SDS-PAGE



Tel: 1-631-559-9269 1-516-512-3133

Email: info@creative-biomart.com Fax: 1-631-938-8127

45-1 Ramsey Road, Shirley, NY 11967, USA