

# Recombinant Full Length Human OPA1 Protein, C-Flag-tagged

Cat. No. OPA1-31HFL Lot. No. (See product label)

## SPECIFICATION

<b>Product Overview</b>	Recombinant Full Length Human OPA1 Protein, fused to Flag-tag at C-terminus, was expressed in Mammalian cells.
<b>Species</b>	Human
<b>Source</b>	Mammalian Cells
<b>Description</b>	The protein encoded by this gene is a nuclear-encoded mitochondrial protein with similarity to dynamin-related GTPases. The encoded protein localizes to the inner mitochondrial membrane and helps regulate mitochondrial stability and energy output. This protein also sequesters cytochrome c. Mutations in this gene have been associated with optic atrophy type 1, which is a dominantly inherited optic neuropathy resulting in progressive loss of visual acuity, leading in many cases to legal blindness.
<b>Form</b>	25 mM Tris HCl, pH 7.3, 100 mM glycine, 10% glycerol.
<b>Molecular Mass</b>	109.2 kDa
<b>AA Sequence</b>	MWRLRRAAVACEVCQSLVKHSSGIKGSPLQKLHLVSRSIYHSHHPTLKLQRPQLRT SFQQFSSLTNLPL RKLKFSPIKYGYQPRRNFWPARLATRLLKRLYLILGSAVGGGYT AKKTFDQWKDMIPDLSEYKWIVPDIV WEIDEYIDFGHKLVSEVIGASDLLLLLLGSPEE TAFRATDRGSESDKHFRKVSDKEKIDQLQEELLHTQLK YQRILERLEKENKELRKL LQKDDKGIHHRKLLKSLIDMYSEVLDVLSDYDASYNTQDHLPRVVVVG DQS AGKTS VLEMIAQARIFPRGSGEMMTRSPVKVTLSEGP HHVALFKDSSREFDLTKEEDLAALR HEIELRMR KNVKEGCTVSPETISLNVKGPGLQRMVLVDLPGVINTVTSGMAPDTKET

 Tel: 1-631-559-9269 1-516-512-3133

 Email: [info@creative-biomart.com](mailto:info@creative-biomart.com)  Fax: 1-631-938-8127

 45-1 Ramsey Road, Shirley, NY 11967, USA



IFSISKAYMQNPNAIILCIQD GSVDAERSIVTDLVSQMDPHGRRTIFVLTKVDLAEKNV  
 ASPSRIQQIIIEGKLFPMKALGYFAVVTGKGNS SESIEAIREYEEFFQNSKLLKTSML  
 KAHQVTTNRNLSLAVSDCFWKMVRESVEQQADSFKATRFNLETEW KNNYPRLRELD  
 RNELFEKAKNEILDEVISLSQVTPKHWEIILQQSLWERVSTHVIENIYLPAAQTMNSG  
 T FNTTVDIKQWTDKQLPNKAVEVAWETLQEEFSRFMTEPKGKEHDDIFDKLKEA  
 VKEESIKRHKWDFE EDRLRVIQHNALEDRSISDKQQWDAAIYFMEEALQARLKDT  
 ENAIENMVGPDWKKRWLYWKNRTQEQCVAH NETKNELEKMLKCNEEHPAYLASDEI  
 TTVRKNLESRGVEVDPSLIKDTWHQVYRRHFLKTALNHCNLCRR GFYYYQRHFVD  
 SELECNDVVLFWRIQRMLAITANTLRQQLTNTTEVRRLEKNVKEVLEDFEAEDGEKKIKL  
 L  
 TGKRVQLAEDLKKVREIQEKLDAFIEALHQEKSGPTRRRLEQKLISEEDLAANDILDY  
 KDDDDKV

<b>Purity</b>	> 80% as determined by SDS-PAGE and Coomassie blue staining.
<b>Stability</b>	Stable for 12 months from the date of receipt of the product under proper storage and handling conditions. Avoid repeated freeze-thaw cycles.
<b>Storage</b>	Store at -80 centigrade.
<b>Concentration</b>	>50 ug/mL as determined by microplate BCA method.
<b>Preparation</b>	Recombinant protein was captured through anti-DDK affinity column followed by conventional chromatography steps.
<b>Full Length</b>	Full L.

## GENE INFORMATION

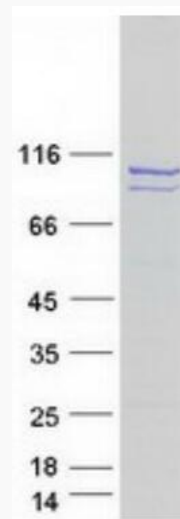
<b>Gene Name</b>	OPA1 OPA1 mitochondrial dynamin like GTPase [ Homo sapiens (human) ]
------------------	--

Tel: 1-631-559-9269 1-516-512-3133

Email: [info@creative-biomart.com](mailto:info@creative-biomart.com) Fax: 1-631-938-8127

45-1 Ramsey Road, Shirley, NY 11967, USA

<b>Official Symbol</b>	OPA1
<b>Synonyms</b>	NPG; NTG; MGM1; BERHS; largeG; MTDPS14
<b>Gene ID</b>	4976
<b>mRNA Refseq</b>	NM_130832.3
<b>Protein Refseq</b>	NP_570845.1
<b>MIM</b>	605290
<b>UniProt ID</b>	E5KCLK0



Coomassie blue staining of purified OPA1 protein.

 Tel: 1-631-559-9269 1-516-512-3133

 Email: [info@creative-biomart.com](mailto:info@creative-biomart.com)  Fax: 1-631-938-8127

 45-1 Ramsey Road, Shirley, NY 11967, USA