

Recombinant Human OPA1 Protein, Myc/DDK-tagged, C13 and N15-labeled

Cat. No. OPA1-3996H **Lot. No.** (See product label)

SPECIFICATION

Product Overview

OPA1 MS Standard C13 and N15-labeled recombinant protein (NP_570845) with a C-terminal MYC/DDK tag, was expressed in HEK293 cells.

Species

Human

Source

HEK293

Description

The protein encoded by this gene is a nuclear-encoded mitochondrial protein with similarity to dynamin-related GTPases. The encoded protein localizes to the inner mitochondrial membrane and helps regulate mitochondrial stability and energy output. This protein also sequesters cytochrome c. Mutations in this gene have been associated with optic atrophy type 1, which is a dominantly inherited optic neuropathy resulting in progressive loss of visual acuity, leading in many cases to legal blindness.

Molecular Mass

109.4 kDa

AA Sequence

MWRLRRAAVACEVCQSLVKHSSGIKGSPLQKLHLVSRSIYHSHHPTLKLQRPQLRT
 SFQQFSSLTNLPLRKLKFSPIKYGYQPRRNFWPARLATRLLKLRYLILGSAVGGGYTA
 KKTFDQWKDMIPDLSEYKWIVPDIVWEIDEYIDFGHKL VSEVIGASDLLLLLG SPEETA
 FRATDRGSESDKHFRKVSDKEKIDQLQEELLHTQLKYQRILERLEKENKELRKLVLQ
 KDDKGIHHRKLLKSLIDMYSEVLDVLSDYDASYNTQDHLPRVVVVG DQSAGKTSVLE
 MIAQARIFPRGSGEMMTRSPVKVTLSEGP HHVALFKDSSREFDLTKEEDLAALRHEI
 ELRMRKNVKEGCTVSPETISLNVKGPGLQRMVLDLPGVINTVTSGMAPDTKETIFSI

 Tel: 1-631-559-9269 1-516-512-3133

 Email: info@creative-biomart.com  Fax: 1-631-938-8127

 45-1 Ramsey Road, Shirley, NY 11967, USA



SKAYMQNPNAIILCIQDGSVDAERSIVTDLVSQMDPHGRRTIFVLTKVDLAEKNVSP
 SRIQQIIEGKLFPMKALGYFAVVTGKGNSSIESIAIREYEEFFQNSKLLKTSMLKAHQ
 VTTRNLSLAVSDCFWKMVRESVEQQADSFKATRFNLETWKNYPRLRELDRELF
 EKAKNEILDEVISLSQVTPKHWEELQQSLWERVSTHVIENIYLPAAQTMNSGTFNTT
 VDIKQKQWTDKQLPNKAVEVAWETLQEEFSRFMTEPKGKEHDDIFDKLKEAVKEESI
 KRHKWINDFAEDSLRVIQHNALEDRSISDKQQWDAAIYFMEEALQARLKDTENAIEN
 MVGPDWKKRWLYWKNRTQEQCVHNETKNELEKMLKCNEEHPAYLASDEITTVRKN
 LESRGVEVDPSLIKDTWHQVYRRHFLKTALNHCNLCRRGFYYYQRHFVDSELECND
 VVLFWRIQRMLAITANTLRQQLTNTVEVRRLEKNVKEVLEDFAEDGEKKIKLLTGKRVQ
 LAEDLKKVREIQEKLDAFIEALHQEKSGPTRRTRRLEQKLISEEDLAANDILDYKDDDDK
 V

Purity	> 80% as determined by SDS-PAGE and Coomassie blue staining
Stability	Stable for 3 months from receipt of products under proper storage and handling conditions.
Storage	Store at -80 centigrade. Avoid repeated freeze-thaw cycles.
Concentration	50 µg/mL as determined by BCA
Storage Buffer	100 mM glycine, 25 mM Tris-HCl, pH 7.3.

GENE INFORMATION

Gene Name	OPA1 OPA1 mitochondrial dynamin like GTPase [Homo sapiens (human)]
Official Symbol	OPA1
Synonyms	OPA1; optic atrophy 1 (autosomal dominant); dynamin-like 120 kDa protein, mitochondrial; dynamin like guanosine triphosphatase; FLJ12460; KIAA0567; MGM1;

mitochondrial dynamin like GTPase; NPG; NTG; optic atrophy protein 1;
mitochondrial dynamin-like GTPase; dynamin-like guanosine triphosphatase;
mitochondrial dynamin-like 120 kDa protein; largeG;

Gene ID 4976

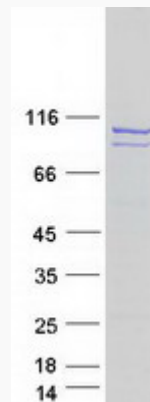
mRNA Refseq NM_130832

Protein Refseq NP_570845

MIM 605290

UniProt ID O60313

SDS-PAGE



 Tel: 1-631-559-9269 1-516-512-3133

 Email: info@creative-biomart.com  Fax: 1-631-938-8127

 45-1 Ramsey Road, Shirley, NY 11967, USA