

Recombinant Human OPN1MW Full Length Transmembrane protein, His-tagged

Cat. No. OPN1MW-613H **Lot. No.** (See product label)

SPECIFICATION

Product Overview

Recombinant Human OPN1MW protein(P04001)(1-364aa), fused with N-terminal His tag, was expressed in in vitro E. coli expression system.

Species

Human

Source

E.coli

ProteinLength

1-364aa

Form

If the delivery form is liquid, the default storage buffer is Tris/PBS-based buffer, 5%-50% glycerol.
If the delivery form is lyophilized powder, the buffer before lyophilization is Tris/PBS-based buffer, 6% Trehalose, pH 8.0.

Molecular Mass

46.6 kDa

AA Sequence

MAQQWSLQRLAGRHPQDSYEDSTQSSIFTYTNNSNSTRGPFEGPNYHIAPRWVYHL
TSVWMIFVVIASVFTNGLVLAATMKFKLRHPLNWILVNLAVADLAETVIASISVVNQ
VYGYFVLGHPMCVLEGYTVSLCGITGLWSLAIISWERWMVCKPFGNVRFDAKLAIV
GIAFSWIWAAVWTAPPIFGWSRYWPHGLKTSCGPDVFSGSSYPGVQSYMIVLMVTC
CITPLSIIVLCYLQVWLAIKRAVAKQQKESESTQKAEKEVTRMVVVMVLAFCFCWGPY
AFFACFAAANPGYPFHPLMAALPAFFAKSATIYNPVIYVFMNRQFRNCILQLFGKKVD
DGSELSSASKTEVSSVSSVSPA

 Tel: 1-631-559-9269 1-516-512-3133

 Email: info@creative-biomart.com  Fax: 1-631-938-8127

 45-1 Ramsey Road, Shirley, NY 11967, USA

Purity	Greater than 85% as determined by SDS-PAGE.
Storage	Store at -20°C/-80°C upon receipt, aliquoting is necessary for mutiple use. Avoid repeated freeze-thaw cycles.
Reconstitution	Please reconstitute protein in deionized sterile water to a concentration of 0.1-1.0 mg/mL. We recommend to add 5-50% of glycerol (final concentration) and aliquot for long-term storage at -20°C/-80°C.

GENE INFORMATION

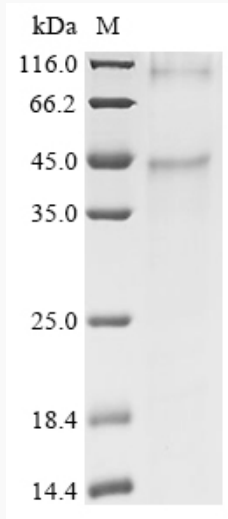
Gene Name	OPN1MW opsin 1 (cone pigments), medium-wave-sensitive [Homo sapiens]
Official Symbol	OPN1MW
Synonyms	OPN1MW; opsin 1 (cone pigments), medium-wave-sensitive; CBBM, CBD, color blindness, deutan , GCP, green cone photoreceptor pigment; medium-wave-sensitive opsin 1; COD5; cone dystrophy 5 (X linked); OPN1MW1; green cone pigment; green-sensitive opsin; photopigment apoprotein; cone dystrophy 5 (X-linked); green cone photoreceptor pigment; CBD; GCP; GOP; CBBM; OPN1MW2; MGC176615; MGC177321; MGC198468; MGC198469;
Gene ID	2652
mRNA Refseq	NM_000513
Protein Refseq	NP_000504
MIM	300821
UniProt ID	P04001

 Tel: 1-631-559-9269 1-516-512-3133

 Email: info@creative-biomart.com  Fax: 1-631-938-8127

 45-1 Ramsey Road, Shirley, NY 11967, USA

SDS-PAGE



 Tel: 1-631-559-9269 1-516-512-3133

 Email: info@creative-biomart.com  Fax: 1-631-938-8127

 45-1 Ramsey Road, Shirley, NY 11967, USA