

Recombinant Human OPN3 Full Length Transmembrane protein, His-tagged

Cat. No. OPN3-5940H Lot. No. (See product label)

SPECIFICATION

Product Overview

Recombinant Human OPN3 protein(Q9H1Y3)(1-402aa), fused to N-terminal His tag, was expressed in E. coli.

Species

Human

Source

E.coli

ProteinLength

1-402aa

Form

If the delivery form is liquid, the default storage buffer is Tris/PBS-based buffer, 5%-50% glycerol.
If the delivery form is lyophilized powder, the buffer before lyophilization is Tris/PBS-based buffer, 6% Trehalose, pH 8.0.

Molecular Mass

47.7 kDa

AA Sequence

MYSGNRSGGHGYWDGGGAAGAEGPAPAGTLPAPLFPSPGTYERLALLLGSIGLLG
VGNLLVLVLYYKFQRLRTPHLLLVNISLSDLLVSLFGVTFTFVSLCRNGWVWDTV
GCVWDGFSGSLFGIVSIATLTVLAYERIRVVHARVINFSWAWRAITYIWLISLAWAG
APLLGWNRYILDVHGLGCTVDWKSKDANDSSFVLFLLGCLVPLGVIAHCYGHILY
SIRMLRCVEDLQTIQVIKILKYEKKLAKMCFLMIFTFLVCWMPYIVICFLVNVNGHGLVT
PTISIVSYLFAKSNTPVYNPVIYVFMIRKFRSLLQLLCLRLLRCQRPKDLPAAGSEMQ
IRPIVMSQKDGDRPKKKVTFNSSSIIFITSDESLSVDDSDKTNGSKVDVIQVRPL

 Tel: 1-631-559-9269 1-516-512-3133

 Email: info@creative-biomart.com  Fax: 1-631-938-8127

 45-1 Ramsey Road, Shirley, NY 11967, USA

Purity	Greater than 85% as determined by SDS-PAGE.
Storage	Store at -20°C/-80°C upon receipt, aliquoting is necessary for mutiple use. Avoid repeated freeze-thaw cycles.
Reconstitution	Please reconstitute protein in deionized sterile water to a concentration of 0.1-1.0 mg/mL. We recommend to add 5-50% of glycerol (final concentration) and aliquot for long-term storage at -20°C/-80°C. Our default final concentration of glycerol is 50%.

GENE INFORMATION

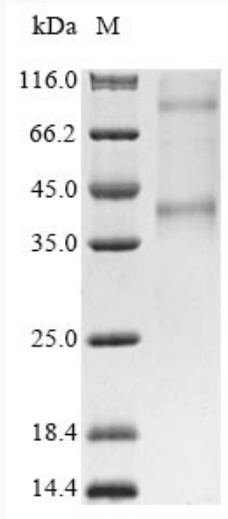
Gene Name	OPN3 opsin 3 [Homo sapiens]
Official Symbol	OPN3
Synonyms	OPN3; opsin 3; ECPN, encephalopsin; opsin-3; encephalopsin; ERO; NMO 1; panopsin; opsin 3 (encephalopsin, panopsin); ECPN;
Gene ID	23596
mRNA Refseq	NM_014322
Protein Refseq	NP_055137
MIM	606695
UniProt ID	Q9H1Y3

 Tel: 1-631-559-9269 1-516-512-3133

 Email: info@creative-biomart.com  Fax: 1-631-938-8127

 45-1 Ramsey Road, Shirley, NY 11967, USA

SDS-PAGE



 Tel: 1-631-559-9269 1-516-512-3133

 Email: info@creative-biomart.com  Fax: 1-631-938-8127

 45-1 Ramsey Road, Shirley, NY 11967, USA