

Recombinant Human OR13A1 Full Length Transmembrane protein, His-tagged

Cat. No. OR13A1-1313H Lot. No. (See product label)

SPECIFICATION

Product Overview	Recombinant Human OR13A1 protein(Q8NGR1)(1-328aa), fused to N-terminal His tag, was expressed in E. coli.
Species	Human
Source	E.coli
ProteinLength	1-328aa
Form	<p>If the delivery form is liquid, the default storage buffer is Tris/PBS-based buffer, 5%-50% glycerol.</p> <p>If the delivery form is lyophilized powder, the buffer before lyophilization is Tris/PBS-based buffer, 6% Trehalose, pH 8.0.</p>
Molecular Mass	39.3 kDa
AA Sequence	<p>MKLWMESHLIVPETRPSRMMNSQTLVTEFILQGFSEHPEYRVFLFSCFLFLYSGAL TGN VLITLAITFNPGLHAPMYFFLLNLATMDIICTSSIMPKALASLVSEESSISYGGCM AQLY FLTWAASSELLLLLTVMAYDRYAAICHPLHYSSMMSKVFCGLATAVWLLCAV NTAIHTGL MLRLDFCGPNVHFFCEVPPLLLLSCSSTYVNGVMIVLADAFYGIVNFLM TIASYGFIV SSILKVKTAWGRQKAFSTCSSHLTVVCMYYTAVFYAYISPVSGYSAGKS KLAGLLYTVLS PTLNPLIYTLRNKEVKAALRKLFPFFRN</p>
Storage	Store at -20°C/-80°C upon receipt, aliquoting is necessary for mutiple use. Avoid

Tel: 1-631-559-9269 1-516-512-3133

Email: info@creative-biomart.com Fax: 1-631-938-8127

45-1 Ramsey Road, Shirley, NY 11967, USA

repeated freeze-thaw cycles.

Reconstitution

Please reconstitute protein in deionized sterile water to a concentration of 0.1-1.0 mg/mL. We recommend to add 5-50% of glycerol (final concentration) and aliquot for long-term storage at -20°C/-80°C. Our default final concentration of glycerol is 50%.

GENE INFORMATION

Gene Name

OR13A1 olfactory receptor, family 13, subfamily A, member 1 [Homo sapiens (human)]

Official Symbol

OR13A1

Synonyms

OR13A1; olfactory receptor, family 13, subfamily A, member 1; olfactory receptor 13A1; olfactory receptor OR10-3; seven transmembrane helix receptor; olfactory receptor 2L13; olfactory receptor 2L14; olfactory receptor, family 2, subfamily L, member 14

Gene ID

79290

mRNA Refseq

NM_001004297

Protein Refseq

NP_001004297

UniProt ID

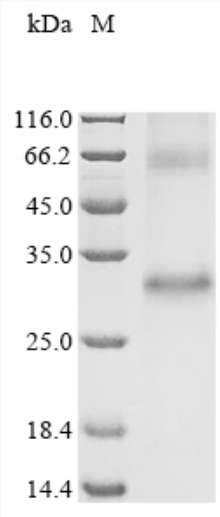
Q8NGR1

 Tel: 1-631-559-9269 1-516-512-3133

 Email: info@creative-biomart.com  Fax: 1-631-938-8127

 45-1 Ramsey Road, Shirley, NY 11967, USA

SDS-PAGE



 Tel: 1-631-559-9269 1-516-512-3133

 Email: info@creative-biomart.com  Fax: 1-631-938-8127

 45-1 Ramsey Road, Shirley, NY 11967, USA