

## Recombinant Human OR2H1 protein, GST-tagged

Cat. No. OR2H1-7877H Lot. No. (See product label)

### SPECIFICATION

<b>Product Overview</b>	Recombinant Human OR2H1 protein(128-170 aa), fused with N-terminal GST tag, was expressed in E. coli.
<b>Species</b>	Human
<b>Source</b>	E. coli
<b>ProteinLength</b>	128-170 aa
<b>Form</b>	The purified protein was lyophilized from sterile phosphate-buffered saline (PBS: 58 mM Na <sub>2</sub> HPO <sub>4</sub> , 17 mM NaH <sub>2</sub> PO <sub>4</sub> , 68 mM NaCl, pH 8.0). Prior to lyophilization, 5% (w/v) trehalose and 5% (w/v) mannitol were incorporated as cryoprotective excipients. The protein was eluted with a buffer containing 100 mM reduced glutathione (GSH).
<b>AASequence</b>	LHYATIIHPRLCWQLASVAWVMSLVQSIVQTPSTLHLPFCPHQ
<b>Purity</b>	90%, by SDS-PAGE.
<b>Storage</b>	Store at 2-8°C for 1-2 weeks. Aliquot and store at -20°C to -80°C for up to 3 months, reconstitution with sterile water and addition of an equal volume of glycerol. Avoid repeat freeze-thaw cycles.
<b>Reconstitution</b>	It is recommended that sterile water be added to the vial to prepare a stock solution of 0.25 ug/ul. Centrifuge the vial at 4°C before opening to recover the entire contents.

 Tel: 1-631-559-9269 1-516-512-3133

 Email: [info@creative-biomart.com](mailto:info@creative-biomart.com)  Fax: 1-631-938-8127

 45-1 Ramsey Road, Shirley, NY 11967, USA

## GENE INFORMATION

**Gene Name** OR2H1 olfactory receptor, family 2, subfamily H, member 1 [ Homo sapiens ]

**Official Symbol** OR2H1

**Synonyms** OR2H1; olfactory receptor, family 2, subfamily H, member 1; olfactory receptor, family 2, subfamily H, member 8 , OR2H6, OR2H8; olfactory receptor 2H1; OR6 2; OLFR42A-9004.14/9026.2; olfactory receptor 2H6; olfactory receptor 2H8; olfactory receptor 6-2; olfactory receptor OR6-32; olfactory receptor, family 2, subfamily H, member 6; olfactory receptor, family 2, subfamily H, member 8; OR2H6; OR2H8; OR6-2; 6M1-16; HS6M1-16; dJ994E9.4; OLFR42A-9004-14;

**mRNA Refseq** NM\_030883

**Protein Refseq** NP\_112145

**UniProt ID** Q9GZK4

**Gene ID** 26716

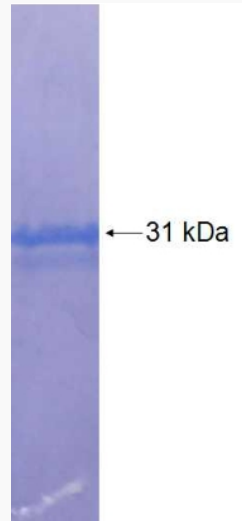
 Tel: 1-631-559-9269 1-516-512-3133

 Email: [info@creative-biomart.com](mailto:info@creative-biomart.com)  Fax: 1-631-938-8127

 45-1 Ramsey Road, Shirley, NY 11967, USA



SDS-PAGE



Tel: 1-631-559-9269 1-516-512-3133

Email: [info@creative-biomart.com](mailto:info@creative-biomart.com) Fax: 1-631-938-8127

45-1 Ramsey Road, Shirley, NY 11967, USA