

Recombinant Full Length Human OR51E2 Protein, C-Flag-tagged

Cat. No. OR51E2-952HFL **Lot. No.** (See product label)

SPECIFICATION

Product Overview	Recombinant Full Length Human OR51E2 Protein, fused to Flag-tag at C-terminus, was expressed in Mammalian cells.
Species	Human
Source	Mammalian Cells
Description	Olfactory receptors interact with odorant molecules in the nose, to initiate a neuronal response that triggers the perception of a smell. The olfactory receptor proteins are members of a large family of G-protein-coupled receptors (GPCR) arising from single coding-exon genes. Olfactory receptors share a 7-transmembrane domain structure with many neurotransmitter and hormone receptors and are responsible for the recognition and G protein-mediated transduction of odorant signals. The olfactory receptor gene family is the largest in the genome. The nomenclature assigned to the olfactory receptor genes and proteins for this organism is independent of other organisms.
Form	25 mM Tris HCl, pH 7.3, 100 mM glycine, 10% glycerol.
Molecular Mass	35.3 kDa
AA Sequence	MSSCNFTHATFVLIGIPGLEKAHFWVGFPLLSMYVVAMFGNCIVVFIVRTERS LHAPM YLFLCMLAAIDL ALSTSTMPKILALFWFDSREISFEACLTQMFFIHLSAIESTILLAMA FDRYVAICHPLRHA AVLNNTVT AQIGIVAVVRGSLFFFPLPLLIKRLAFCHSNVLSHSY

 Tel: 1-631-559-9269 1-516-512-3133

 Email: info@creative-biomart.com  Fax: 1-631-938-8127

 45-1 Ramsey Road, Shirley, NY 11967, USA

CVHQDVMKLAYADTLPNVVYGLTAILLVMGVDV MFISLSYFLIIRTVLQLPSKSERAK
 AFGTCVSHIGVVLAIFYVPLIGLSVVHRFGNSLHPVIRVVMGDIYL
 LLPPVINPIIYGAKTKQIRTRVLAMFKISCDKDLQAVGGKTRTRPLEQKLISEEDLAAN
 DILDYKDDDDKV

Purity	> 80% as determined by SDS-PAGE and Coomassie blue staining.
Stability	Stable for 12 months from the date of receipt of the product under proper storage and handling conditions. Avoid repeated freeze-thaw cycles.
Storage	Store at -80 centigrade.
Concentration	>50 ug/mL as determined by microplate BCA method.
Preparation	Recombinant protein was captured through anti-DDK affinity column followed by conventional chromatography steps.
Protein Families	Druggable Genome, GPCR, Transmembrane
Protein Pathways	Olfactory transduction
Full Length	Full L.

GENE INFORMATION

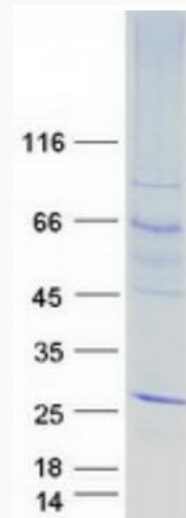
Gene Name	OR51E2 olfactory receptor family 51 subfamily E member 2 [Homo sapiens (human)]
Official Symbol	OR51E2
Synonyms	PSGR; HPRAJ; OR52A2; OR51E3P

 Tel: 1-631-559-9269 1-516-512-3133

 Email: info@creative-biomart.com  Fax: 1-631-938-8127

 45-1 Ramsey Road, Shirley, NY 11967, USA

Gene ID	81285
mRNA Refseq	NM_030774.4
Protein Refseq	NP_110401.1
MIM	611268
UniProt ID	Q9H255



Coomassie blue staining of purified OR51E2 protein.

Tel: 1-631-559-9269 1-516-512-3133

Email: info@creative-biomart.com Fax: 1-631-938-8127

45-1 Ramsey Road, Shirley, NY 11967, USA