

Recombinant Human ORC1 Protein, GST-tagged

Cat. No. ORC1-01H Lot. No. (See product label)

SPECIFICATION

Product Overview	Recombinant AH domain region of ORC1 protein with a N-terminal GST tag was expressed in E. coli.
Species	Human
Source	E.coli
ProteinLength	2-185
Description	<p>The origin recognition complex (ORC) is a highly conserved six subunits protein complex essential for the initiation of the DNA replication in eukaryotic cells. Studies in yeast demonstrated that ORC binds specifically to origins of replication and serves as a platform for the assembly of additional initiation factors such as Cdc6 and Mcm proteins. The protein encoded by this gene is the largest subunit of the ORC complex. While other ORC subunits are stable throughout the cell cycle, the levels of this protein vary during the cell cycle, which has been shown to be controlled by ubiquitin-mediated proteolysis after initiation of DNA replication. This protein is found to be selectively phosphorylated during mitosis. It is also reported to interact with MYST histone acetyltransferase 2 (MyST2/HBO1), a protein involved in control of transcription silencing. Alternatively spliced transcript variants encoding different isoforms have been found for this gene.</p>
Molecular Mass	48.2 kDa
Purity	≥ 80%

 Tel: 1-631-559-9269 1-516-512-3133

 Email: info@creative-biomart.com  Fax: 1-631-938-8127

 45-1 Ramsey Road, Shirley, NY 11967, USA

Stability	≥ 6 months
Storage	Store at -80 centigrade.
Storage Buffer	20 mM Tris, pH 8.0, with 50 mM sodium chloride and 20% glycerol
Shipping	Dry ice in continental US; may vary elsewhere

GENE INFORMATION

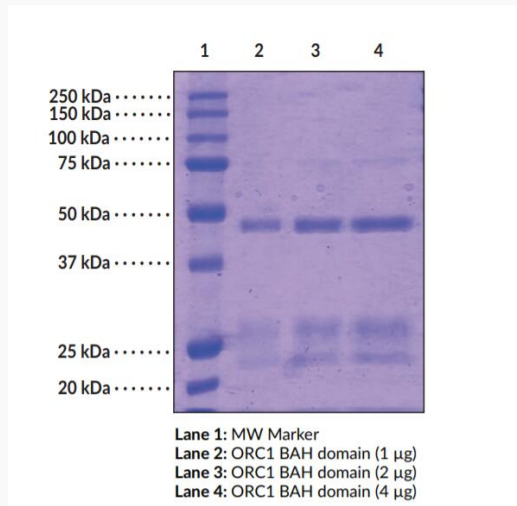
Gene Name	ORC1 origin recognition complex subunit 1 [Homo sapiens (human)]
Official Symbol	ORC1
Synonyms	ORC1; origin recognition complex subunit 1; ORC1L; PARC1; HSORC1; origin recognition complex subunit 1; origin recognition complex, subunit 1 homolog; replication control protein 1
Gene ID	4998
mRNA Refseq	NM_004153
Protein Refseq	NP_004144
MIM	601902
UniProt ID	Q13415

 Tel: 1-631-559-9269 1-516-512-3133

 Email: info@creative-biomart.com  Fax: 1-631-938-8127

 45-1 Ramsey Road, Shirley, NY 11967, USA

SDS-PAGE



 Tel: 1-631-559-9269 1-516-512-3133

 Email: info@creative-biomart.com  Fax: 1-631-938-8127

 45-1 Ramsey Road, Shirley, NY 11967, USA