

## Recombinant Human ORC1 protein, GST-tagged

Cat. No. ORC1-322H Lot. No. (See product label)

### SPECIFICATION

<b>Product Overview</b>	Recombinant Human ORC1 protein(Q13415)(1-861aa), fused with N-terminal GST tag, was expressed in E.coli.
<b>Species</b>	Human
<b>Source</b>	E.coli
<b>ProteinLength</b>	1-861aa
<b>Form</b>	If the delivery form is liquid, the default storage buffer is Tris/PBS-based buffer, 5%-50% glycerol. If the delivery form is lyophilized powder, the buffer before lyophilization is Tris/PBS-based buffer, 6% Trehalose, pH 8.0.
<b>Molecular Mass</b>	123.6 kDa
<b>Purity</b>	Greater than 85% as determined by SDS-PAGE.
<b>Storage</b>	Store at -20°C/-80°C upon receipt, aliquoting is necessary for mutiple use. Avoid repeated freeze-thaw cycles.
<b>Reconstitution</b>	We recommend that this vial be briefly centrifuged prior to opening to bring the contents to the bottom. Please reconstitute protein in deionized sterile water to a concentration of 0.1-1.0 mg/mL. We recommend to add 5-50% of glycerol (final concentration) and aliquot for long-term storage at -20°C/-80°C.

 Tel: 1-631-559-9269 1-516-512-3133

 Email: [info@creative-biomart.com](mailto:info@creative-biomart.com)  Fax: 1-631-938-8127

 45-1 Ramsey Road, Shirley, NY 11967, USA

**AA Sequence**

MAHYPTRLKTRKTYSWVGRPLLDRKLHYQTYREMCVKTEGCSTEIHIQIGQFVLIEG  
 DDENPYVAKLLELFEDDSDPPPKKRARVQWFVRFCEVPACKRHLLGRKPGAQEIF  
 WYDYPACDSNINAETIIGLVRVIPLAPKDVVPTNLKNEKTLFVKLSWNEKKFRPLSSEL  
 FAELNKPQESAACQKPVRAKSKSAESPSWTPAEHVAKRIESRHSASKSRQTPHP  
 LTPRARKRLELGNLGNPQMSQQTSCASLDSPGRIKRKVAFSEITSPSKRSQPKLQT  
 LSPALKAPEKTRETGLSYTEDDKKASPEHRILRTRIAASKTIDIREERTLTPISGGQRS  
 SVVPSVILKPENIKKRDAKEAKAQNEATSTPHRIRRKSSVLTMNRIRQQLRFLGNSKS  
 DQEEKEILPAAEISDSSSDEEEASTPPLPRRAPRTVSRNLRSLLKSSLHTLTKVPKKS  
 LKPRTPRCAAPQIRSRSLAAQEPASVLEEARLRLHVSAPESLPCREQEFQDIYNFV  
 ESKLLDHTGGCMYISGVPGTGKTATVHEVIRCLQQAQANDVPPFQYIEVNGMKLTE  
 PHQVYVQILQKLTGQKATANHAAELLAKQFCTRGSPQETTULLVDELDLLWTHKQDI  
 MYNLFDWPTHKEARLVVLAIAANTMDLPERIMMNRVSSRLGLTRMCFQPYTYSQLQQ  
 ILRSRLKHLKAFEDDAIQLVARKVAALSGDARRCLDICRRATEICEFSQQKPDSPGLV  
 TIAHSMEAVDEMFSSSYITAIKNSSVLEQSFLRAILAEFRRSGLEEATFQQIYSQHVAL  
 CRMEGLPYPTMSETMAVCSHLGSCRLLLVEPSRNDLLLRVRLNVSQDDVLYALKDE

**GENE INFORMATION**

**Gene Name** [ORC1 origin recognition complex, subunit 1 \[ Homo sapiens \]](#)

**Official Symbol** [ORC1](#)

**Synonyms**

ORC1; origin recognition complex, subunit 1; ORC1L, origin recognition complex, subunit 1 (yeast homolog) like , origin recognition complex, subunit 1 homolog (S. cerevisiae) , origin recognition complex, subunit 1 like (yeast); origin recognition complex subunit 1; HSORC1; origin recognition complex 1; origin recognition complex; subunit 1; S. cerevisiae; homolog like; PARC1; replication control protein 1; origin recognition complex, subunit 1-like; origin recognition complex, subunit 1 homolog; ORC1L;

 Tel: 1-631-559-9269 1-516-512-3133

 Email: [info@creative-biomart.com](mailto:info@creative-biomart.com)  Fax: 1-631-938-8127

 45-1 Ramsey Road, Shirley, NY 11967, USA

**Gene ID** 4998

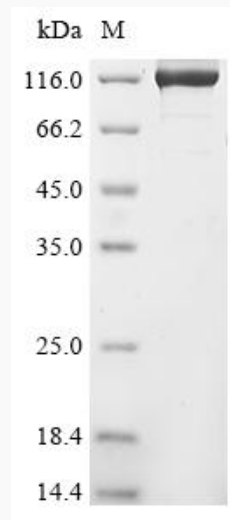
**mRNA Refseq** NM\_001190818

**Protein Refseq** NP\_001177747

**MIM** 601902

**UniProt ID** Q13415

**SDS-PAGE**



 Tel: 1-631-559-9269 1-516-512-3133

 Email: [info@creative-biomart.com](mailto:info@creative-biomart.com)  Fax: 1-631-938-8127

 45-1 Ramsey Road, Shirley, NY 11967, USA