

Recombinant Human ORC2 Protein, Myc/DDK-tagged, C13 and N15-labeled

Cat. No. ORC2-2904H **Lot. No.** (See product label)

SPECIFICATION

Product Overview	ORC2L MS Standard C13 and N15-labeled recombinant protein (NP_006181) with a C-terminal MYC/DDK tag, was expressed in HEK293 cells.
Species	Human
Source	HEK293
Description	<p>The origin recognition complex (ORC) is a highly conserved six subunits protein complex essential for the initiation of the DNA replication in eukaryotic cells. Studies in yeast demonstrated that ORC binds specifically to origins of replication and serves as a platform for the assembly of additional initiation factors such as Cdc6 and Mcm proteins. The protein encoded by this gene is a subunit of the ORC complex. This protein forms a core complex with ORC3, -4, and -5. It also interacts with CDC45 and MCM10, which are proteins known to be important for the initiation of DNA replication. This protein has been demonstrated to specifically associate with the origin of replication of Epstein-Barr virus in human cells, and is thought to be required for DNA replication from viral origin of replication. Alternatively spliced transcript variants have been found, one of which is a nonsense-mediated mRNA decay candidate.</p>
Molecular Mass	66 kDa
AA Sequence	MSKPELKEDKMLEVFVGGDDVLNHILDREGGAKLKKERAQLLVNPKKIIKKPEYDLE EDDQEVLDQNYVEIMGRDVQESLKNQSATGGGNKVYSFQNRKHSEKMAKLASEL

 Tel: 1-631-559-9269 1-516-512-3133

 Email: info@creative-biomart.com  Fax: 1-631-938-8127

 45-1 Ramsey Road, Shirley, NY 11967, USA

AKTPQKSVSFLKNDPEITINVPQSSKGHSASDKVQPKNNDKSEFLSTAPRSLRKRLI
 VPRSHSDSESEYSASNSEDEGVAQEHEEDTNAVIFSQKIQAQNRVVSAPVKGKTP
 SKRMKRDKTSDLVEEYFEAHSSSKVLTSDRTLQKLKRAKLDQQTLRNLLSKVSPSFS
 AELKQLNQYKELFHKWMLQLHLGFNIVLYGLGSKRDLLERFRTTMLQDSIHVING
 FFPGISVKSVLNSITEEVLDMGTFRSILDQLDWIVNKFEDSSLELFLLIHNLDSQML
 RGEKSQQIIGQLSSLHNIYLIASIDHLNAPLMWDHAKQSLFNWLWYETTTYSPTYTEET
 SYENSLLVKQSGSLPLSSLTHVLRSLTPNARGIFRLLIKYQLDNQDNPSYIGLSFQDF
 YQQCREAFLVNSDLTLRAQLTEFRDHKLIRTKKGTGVEYLLIPVDNGTLTDFLEKEE
 EEATRTRPLEQKLISEEDLAANDILDYKDDDDKV

Purity > 80% as determined by SDS-PAGE and Coomassie blue staining

Stability Stable for 3 months from receipt of products under proper storage and handling conditions.

Storage Store at -80 centigrade. Avoid repeated freeze-thaw cycles.

Concentration 50 µg/mL as determined by BCA

Storage Buffer 100 mM glycine, 25 mM Tris-HCl, pH 7.3.

GENE INFORMATION

Gene Name [ORC2 origin recognition complex subunit 2 \[Homo sapiens \(human\) \]](#)

Official Symbol [ORC2](#)

Synonyms ORC2; origin recognition complex, subunit 2; ORC2L, origin recognition complex, subunit 2 (yeast homolog) like, origin recognition complex, subunit 2 homolog (yeast), origin recognition complex, subunit 2 like (yeast); origin recognition complex subunit 2; origin recognition complex, subunit 2-like; origin recognition complex protein 2

 Tel: 1-631-559-9269 1-516-512-3133

 Email: info@creative-biomart.com  Fax: 1-631-938-8127

 45-1 Ramsey Road, Shirley, NY 11967, USA

homolog; origin recognition complex, subunit 2 homolog; ORC2L;

Gene ID 4999

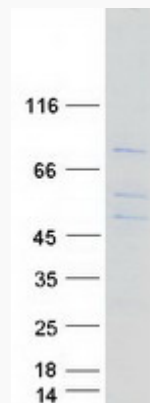
mRNA Refseq NM_006190

Protein Refseq NP_006181

MIM 601182

UniProt ID Q13416

SDS-PAGE



 Tel: 1-631-559-9269 1-516-512-3133

 Email: info@creative-biomart.com  Fax: 1-631-938-8127

 45-1 Ramsey Road, Shirley, NY 11967, USA