

Recombinant Human ORC4 Protein, Myc/DDK-tagged, C13 and N15-labeled

Cat. No. ORC4-1558H Lot. No. (See product label)

SPECIFICATION

Product Overview

ORC4L MS Standard C13 and N15-labeled recombinant protein (NP_002543) with a C-terminal MYC/DDK tag, was expressed in HEK293 cells.

Species

Human

Source

HEK293

Description

The origin recognition complex (ORC) is a highly conserved six subunit protein complex essential for the initiation of the DNA replication in eukaryotic cells. Studies in yeast demonstrated that ORC binds specifically to origins of replication and serves as a platform for the assembly of additional initiation factors such as Cdc6 and Mcm proteins. This gene encodes a subunit of the ORC complex. Several alternatively spliced transcript variants, some of which encode the same protein, have been reported for this gene.

Molecular Mass

50.4 kDa

AA Sequence

MSSRKSKSNSLIHTECLSQVQRILRERFCRQSPHSNLFQVQVQYKHLSELLKRTALH
 GESNSVLIIGPRGSGKTM LINHALKELMEIEEVSENLVQVHLNGLLQINDKIALKEITRQ
 LNLENVVGDKVFSGFAENLSFLLEALKKGDRTSSCPVIFILDEFDLFAHKNQTLTYN
 LFDISQSAQTPIAVIGLTCRLDILELLEKRVKSRFSHRQIHLMNSFGFPQYVKIFKEQLS
 LPAEFPDKVFAEKWNENVQYLSEDRSVQEVLQKHFNISKNLRLSHMLLMLALNRVTA
 SHPFMTAVDLMEASQLCSMDSKANIVHGLSVLEICLIAMKHLNDIYEEEPFNFQMVY

 Tel: 1-631-559-9269 1-516-512-3133

 Email: info@creative-biomart.com  Fax: 1-631-938-8127

 45-1 Ramsey Road, Shirley, NY 11967, USA

NEFQKFVQRKAHSVYNFEKPVVMKAFEHLQQLELIKPMERTSGNSQREYQLMKLLL
DNTQIMNALQKYPNCPTDVRQWATSSLSWLTRTRPLEQKLISEEDLAANDILDYKDD
DDKV

Purity > 80% as determined by SDS-PAGE and Coomassie blue staining

Stability Stable for 3 months from receipt of products under proper storage and handling conditions.

Storage Store at -80 centigrade. Avoid repeated freeze-thaw cycles.

Concentration 50 µg/mL as determined by BCA

Storage Buffer 100 mM glycine, 25 mM Tris-HCl, pH 7.3.

GENE INFORMATION

Gene Name [ORC4 origin recognition complex subunit 4 \[Homo sapiens \(human\) \]](#)

Official Symbol [ORC4](#)

Synonyms ORC4; origin recognition complex, subunit 4; ORC4L, origin recognition complex, subunit 4 (yeast homolog) like, origin recognition complex, subunit 4 homolog (*S. cerevisiae*), origin recognition complex, subunit 4 like (*S. cerevisiae*), origin recognition complex, subunit 4 like (yeast); origin recognition complex subunit 4; HsORC4; Orc4p; origin recognition complex, subunit 4-like; origin recognition complex, subunit 4 homolog; ORC4L; ORC4P; FLJ46668;

Gene ID [5000](#)

mRNA Refseq [NM_002552](#)

 Tel: 1-631-559-9269 1-516-512-3133

 Email: info@creative-biomart.com  Fax: 1-631-938-8127

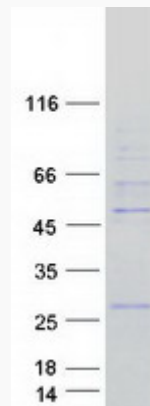
 45-1 Ramsey Road, Shirley, NY 11967, USA

Protein Refseq NP_002543

MIM 603056

UniProt ID O43929

SDS-PAGE



 Tel: 1-631-559-9269 1-516-512-3133

 Email: info@creative-biomart.com  Fax: 1-631-938-8127

 45-1 Ramsey Road, Shirley, NY 11967, USA