

Recombinant Human ORC6 Protein, Myc/DDK-tagged, C13 and N15-labeled

Cat. No. ORC6-3522H **Lot. No.** (See product label)

SPECIFICATION

Product Overview

ORC6L MS Standard C13 and N15-labeled recombinant protein (NP_055136) with a C-terminal MYC/DDK tag, was expressed in HEK293 cells.

Species

Human

Source

HEK293

Description

The origin recognition complex (ORC) is a highly conserved six subunit protein complex essential for the initiation of the DNA replication in eukaryotic cells. Studies in yeast demonstrated that ORC binds specifically to origins of replication and serves as a platform for the assembly of additional initiation factors such as Cdc6 and Mcm proteins. The protein encoded by this gene is a subunit of the ORC complex. Gene silencing studies with small interfering RNA demonstrated that this protein plays an essential role in coordinating chromosome replication and segregation with cytokinesis.

Molecular Mass

28.1 kDa

AA Sequence

MGSELIGRLAPRLGLAEPDMLRKAEEYLRLSRVKCVGLSARTTETSSAVMCLDLAAS
WMKCPDRAYLIKLSGLNKETYQSCLKSFECLLGLNSNIGIRDLAVQFSCIEAVNMA
KILKSYESSLPQTQQVDLDSRPLFTSAALLSACKILKLVKDKNKMVATSGVKKAIFDR
LCKQLEKIGQQVDREPGDVATPPRKRKKIVVEAPAKEMEKVEEMPHKPKQKDEDLTQ
DYEEWKRKILENAASAQKATAETRTRPLEQKLISEEDLAANDILDYKDDDDKV

 Tel: 1-631-559-9269 1-516-512-3133

 Email: info@creative-biomart.com  Fax: 1-631-938-8127

 45-1 Ramsey Road, Shirley, NY 11967, USA

Purity	> 80% as determined by SDS-PAGE and Coomassie blue staining
Stability	Stable for 3 months from receipt of products under proper storage and handling conditions.
Storage	Store at -80 centigrade. Avoid repeated freeze-thaw cycles.
Concentration	50 µg/mL as determined by BCA
Storage Buffer	100 mM glycine, 25 mM Tris-HCl, pH 7.3.

GENE INFORMATION

Gene Name	ORC6 origin recognition complex subunit 6 [Homo sapiens (human)]
Official Symbol	ORC6
Synonyms	ORC6; origin recognition complex, subunit 6; ORC6L, origin recognition complex, subunit 6 homolog like (yeast), origin recognition complex, subunit 6 like (yeast); origin recognition complex subunit 6; ORC6L;
Gene ID	23594
mRNA Refseq	NM_014321
Protein Refseq	NP_055136
MIM	607213
UniProt ID	Q9Y5N6

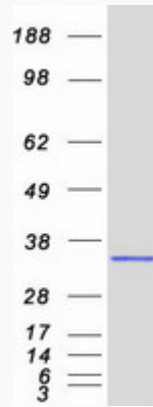
 Tel: 1-631-559-9269 1-516-512-3133

 Email: info@creative-biomart.com  Fax: 1-631-938-8127

 45-1 Ramsey Road, Shirley, NY 11967, USA



SDS-PAGE



Tel: 1-631-559-9269 1-516-512-3133

Email: info@creative-biomart.com Fax: 1-631-938-8127

45-1 Ramsey Road, Shirley, NY 11967, USA