

Recombinant Full Length Human ORM1 Protein, C-Flag-tagged

Cat. No. ORM1-638HFL Lot. No. (See product label)

SPECIFICATION

Product Overview	Recombinant Full Length Human ORM1 Protein, fused to Flag-tag at C-terminus, was expressed in Mammalian cells.
Species	Human
Source	Mammalian Cells
Description	This gene encodes a key acute phase plasma protein. Because of its increase due to acute inflammation, this protein is classified as an acute-phase reactant. The specific function of this protein has not yet been determined; however, it may be involved in aspects of immunosuppression.
Form	25 mM Tris HCl, pH 7.3, 100 mM glycine, 10% glycerol.
Molecular Mass	21.5 kDa
AA Sequence	MALSWVLTVLSLLPLLEAQIPLCANLVPVPITNATLDTRITGKWFYIASAFRNEEYNKSV QEIQATFFYFT PNKTEDTIFLREYQTRQDQCIYNTTYLNVQRENGTISRIVGGQEHF AHLILRDTKTYMLAFDVNDEKNW GLSVYADKPETTKEQLGEFYEALDCLRIPKSDVVYTDWKKDKCEPLEKQHEKERKQ EEGESTRTRPLEQKLISEEDLAANDILDYKDDDDKV
Purity	> 80% as determined by SDS-PAGE and Coomassie blue staining.
Stability	Stable for 12 months from the date of receipt of the product under proper storage and

 Tel: 1-631-559-9269 1-516-512-3133

 Email: info@creative-biomart.com  Fax: 1-631-938-8127

 45-1 Ramsey Road, Shirley, NY 11967, USA

handling conditions. Avoid repeated freeze-thaw cycles.

Storage Store at -80 centigrade.

Concentration >50 ug/mL as determined by microplate BCA method.

Preparation Recombinant protein was captured through anti-DDK affinity column followed by conventional chromatography steps.

Protein Families Druggable Genome, Secreted Protein

Full Length Full L.

GENE INFORMATION

Gene Name ORM1 orosomuroid 1 [Homo sapiens (human)]

Official Symbol ORM1

Synonyms ORM; AGP1; AGP-A; HEL-S-153w

Gene ID 5004

mRNA Refseq NM_000607.4

Protein Refseq NP_000598.2

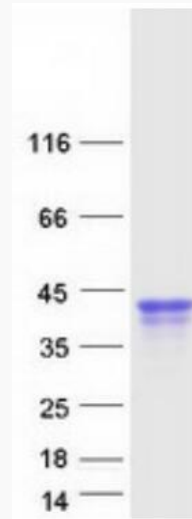
MIM 138600

UniProt ID P02763

 Tel: 1-631-559-9269 1-516-512-3133

 Email: info@creative-biomart.com  Fax: 1-631-938-8127

 45-1 Ramsey Road, Shirley, NY 11967, USA



Coomassie blue staining of purified ORM1 protein.

 Tel: 1-631-559-9269 1-516-512-3133

 Email: info@creative-biomart.com  Fax: 1-631-938-8127

 45-1 Ramsey Road, Shirley, NY 11967, USA