

# Recombinant Full Length Human OSGIN1 Protein, Flag tagged

Cat. No. OSGIN1-33HFL Lot. No. (See product label)

## SPECIFICATION

<b>Product Overview</b>	Recombinant full length protein of human oxidative stress induced growth inhibitor 1 (OSGIN1), transcript variant 1 with Flag tag was expressed in HEK293.
<b>Species</b>	Human
<b>Source</b>	HEK293T
<b>ProteinLength</b>	1-477 aa
<b>Description</b>	This gene encodes an oxidative stress response protein that regulates cell death. Expression of the gene is regulated by p53 and is induced by DNA damage. The protein regulates apoptosis by inducing cytochrome c release from mitochondria. It also appears to be a key regulator of both inflammatory and anti-inflammatory molecules. The loss of this protein correlates with uncontrolled cell growth and tumor formation. Naturally occurring read-through transcription exists between this gene and the neighboring upstream malonyl-CoA decarboxylase (MLYCD) gene, but the read-through transcripts are unlikely to produce a protein product.
<b>Molecular Mass</b>	60.7 kDa
<b>Purity</b>	> 80% by SDS-PAGE and Coomassie blue staining
<b>Note</b>	For testing in cell culture applications, please filter before use. Note that you may experience some loss of protein during the filtration process.

 Tel: 1-631-559-9269 1-516-512-3133

 Email: [info@creative-biomart.com](mailto:info@creative-biomart.com)  Fax: 1-631-938-8127

 45-1 Ramsey Road, Shirley, NY 11967, USA

<b>Stability</b>	Stable for 12 months from the date of receipt of the product under proper storage and handling conditions. Avoid repeated freeze-thaw cycles.
<b>Storage</b>	Store at -80 centigrade.
<b>Storage Buffer</b>	25 mM Tris-HCl, 100 mM glycine, pH 7.3, 10% glycerol
<b>Concentration</b>	> 0.05 µg/µL as determined by microplate BCA method
<b>Shipping</b>	Dry ice

## GENE INFORMATION

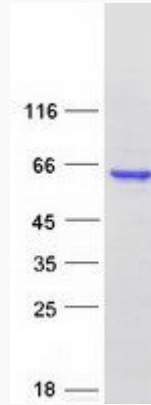
<b>Gene Name</b>	OSGIN1 oxidative stress induced growth inhibitor 1 [ Homo sapiens (human) ]
<b>Official Symbol</b>	OSGIN1
<b>Synonyms</b>	OSGIN1; oxidative stress induced growth inhibitor 1; BDGI; OKL38; oxidative stress-induced growth inhibitor 1; BMSC-derived growth inhibitor; bone marrow stromal cell-derived growth inhibitor; ovary, kidney and liver protein 38; pregnancy-induced growth inhibitor OKL38
<b>Gene ID</b>	29948
<b>mRNA Refseq</b>	NM_013370
<b>Protein Refseq</b>	NP_037502
<b>MIM</b>	607975
<b>UniProt ID</b>	Q9UJX0

 Tel: 1-631-559-9269 1-516-512-3133

 Email: [info@creative-biomart.com](mailto:info@creative-biomart.com)  Fax: 1-631-938-8127

 45-1 Ramsey Road, Shirley, NY 11967, USA

**SDS-PAGE**



 Tel: 1-631-559-9269 1-516-512-3133

 Email: [info@creative-biomart.com](mailto:info@creative-biomart.com)  Fax: 1-631-938-8127

 45-1 Ramsey Road, Shirley, NY 11967, USA