

Active Recombinant Human OSM protein

Cat. No. OSM-2601H **Lot. No.** (See product label)

SPECIFICATION

Product Overview	Active Recombinant Human Oncostatin-M/OSM Protein is produced by E. coli expression system. The target protein is expressed with sequence (Ala26-Arg221) of human Oncostatin-M/OSM (Accession #NP_065391.1).
Species	Human
Source	E.coli
ProteinLength	Ala26-Arg221
Form	Lyophilized from a 0.22 µm filtered solution of PBS, pH 7.4.
Bio-activity	Measured in a cell proliferation assay using TF-1 human erythroleukemic cells. The ED50 for this effect is typically 0.8-3.2 ng/mL.
Molecular Mass	24 kDa
Endotoxin	< 0.01 EU/µg of the protein by LAL method.
Purity	> 95% by SDS-PAGE.
Storage	Store the lyophilized protein at -20°C to -80 °C for long term. After reconstitution, the protein solution is stable at -20 °C for 3 months, at 2-8 °C for up to 1 week.

 Tel: 1-631-559-9269 1-516-512-3133

 Email: info@creative-biomart.com  Fax: 1-631-938-8127

 45-1 Ramsey Road, Shirley, NY 11967, USA

Reconstitution Reconstitute to a concentration of 0.1-0.5 mg/mL in sterile distilled water.

GENE INFORMATION

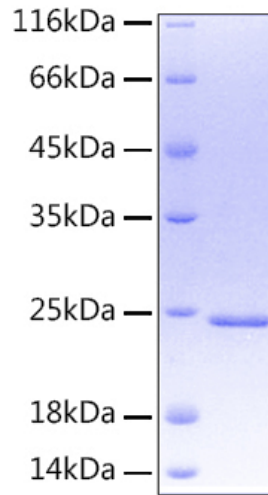
Gene Name	OSM oncostatin M [Homo sapiens]
Official Symbol	OSM
Synonyms	OSM; oncostatin M; oncostatin-M; MGC20461;
Gene ID	5008
mRNA Refseq	NM_020530
Protein Refseq	NP_065391
MIM	165095
UniProt ID	P13725

 Tel: 1-631-559-9269 1-516-512-3133

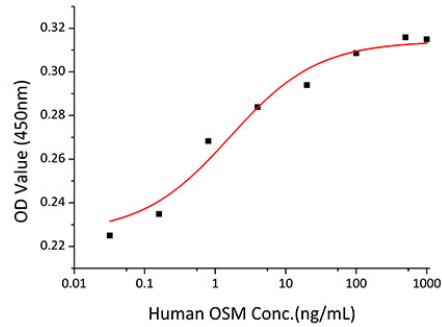
 Email: info@creative-biomart.com  Fax: 1-631-938-8127

 45-1 Ramsey Road, Shirley, NY 11967, USA

SDS-PAGE



Bio-activity



 Tel: 1-631-559-9269 1-516-512-3133

 Email: info@creative-biomart.com  Fax: 1-631-938-8127

 45-1 Ramsey Road, Shirley, NY 11967, USA