

Recombinant Human OSM protein, His-Avi-tagged

Cat. No. OSM-725H Lot. No. (See product label)

SPECIFICATION

Product Overview	Recombinant Human Oncostatin M Protein is expressed from mammalian with His Tag and Avi Tag at the C-terminal. It contains Ala26-Arg221.
Species	Human
Source	HEK293
ProteinLength	Ala26-Arg221
Description	OSM is a pleiotropic cytokine that initiates its biological activities by binding to specific cell surface receptors. Inhibits the proliferation of a number of tumor cell lines. Stimulates proliferation of AIDSKS cells. It regulates cytokine production, including IL-6, G-CSF and GM-CSF from endothelial cells. Uses both type I OSM receptor (heterodimers composed of LIFR and IL6ST) and type II OSM receptor (heterodimers composed of OSMR and IL6ST). Involved in the maturation of fetal hepatocytes, thereby promoting liver development and regeneration.
Form	Supplied as 0.22um filtered solution in 20mM PBS,pH7.4
Molecular Mass	The protein has a predicted MW of 25.1 KDa. Due to glycosylation, the protein migrates to 30- 40KDa based on Bis-Tris PAGE result.
Endotoxin	Less than 0.05EU per ug by the LAL method.
Purity	> 95% as determined by Tris-Bis PAGE; > 95% as determined by HPLC

 Tel: 1-631-559-9269 1-516-512-3133

 Email: info@creative-biomart.com  Fax: 1-631-938-8127

 45-1 Ramsey Road, Shirley, NY 11967, USA

Storage The product should be stored at -70°C. Please do not repeated freeze-thaw cycles.

GENE INFORMATION

Gene Name OSM oncostatin M [Homo sapiens (human)]

Official Symbol OSM

Synonyms

OSM is a pleiotropic cytokine that initiates its biological activities by binding to specific cell surface receptors. Inhibits the proliferation of a number of tumor cell lines. Stimulates proliferation of AIDS-KS cells. It regulates cytokine production, including IL-6, G-CSF and GM-CSF from endothelial cells. Uses both type I OSM receptor (heterodimers composed of LIFR and IL6ST) and type II OSM receptor (heterodimers composed of OSMR and IL6ST). Involved in the maturation of fetal hepatocytes, thereby promoting liver development and regeneration .

Gene ID 5008

mRNA Refseq NM_001319108.2

Protein Refseq NP_001306037.1

MIM 165095

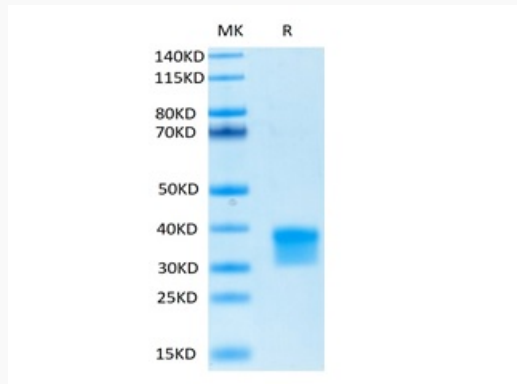
UniProt ID P13725

 Tel: 1-631-559-9269 1-516-512-3133

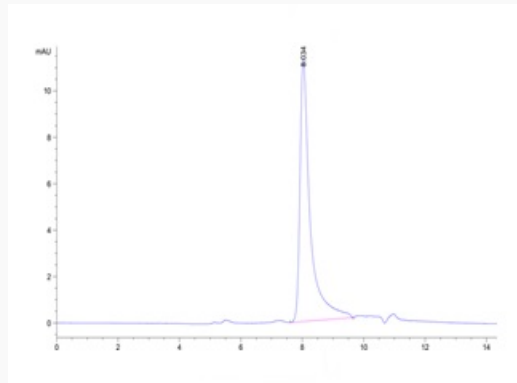
 Email: info@creative-biomart.com  Fax: 1-631-938-8127

 45-1 Ramsey Road, Shirley, NY 11967, USA

**Tris-Bis PAGE of
OSM-725H**



**SEC-HPLC of OSM-
725H**



 Tel: 1-631-559-9269 1-516-512-3133

 Email: info@creative-biomart.com  Fax: 1-631-938-8127

 45-1 Ramsey Road, Shirley, NY 11967, USA