

Recombinant Full Length Human OSM Protein, C-Flag-tagged

Cat. No. OSM-945HFL **Lot. No.** (See product label)

SPECIFICATION

Product Overview	Recombinant Full Length Human OSM Protein, fused to Flag-tag at C-terminus, was expressed in Mammalian cells.
Species	Human
Source	Mammalian Cells
Description	This gene encodes a member of the leukemia inhibitory factor/oncostatin-M (LIF/OSM) family of proteins. The encoded preproprotein is proteolytically processed to generate the mature protein. This protein is a secreted cytokine and growth regulator that inhibits the proliferation of a number of tumor cell lines. This protein also regulates the production of other cytokines, including interleukin 6, granulocyte-colony stimulating factor and granulocyte-macrophage colony stimulating factor in endothelial cells. This gene and the related gene, leukemia inhibitory factor, also present on chromosome 22, may have resulted from the duplication of a common ancestral gene. Alternative splicing results in multiple transcript variants, at least one of which encodes an isoform that is proteolytically processed.
Form	25 mM Tris HCl, pH 7.3, 100 mM glycine, 10% glycerol.
Molecular Mass	25.7 kDa
AA Sequence	MGVLLTQRTL LSLVLALLFPSMASMAAIGSCSKEYRVLLGQLQKQTDLMQDTSRLLD PYIRIQGLDVPKL REHCRERPGAFPSEETLRGLGRRGFLQTLNATLGCVLHRLADLE QRLPKAQDLERSGLNIEDLEKLQMAR PNILGLRNNIYCMAQLLDNSDTAEPTKAGR

 Tel: 1-631-559-9269 1-516-512-3133

 Email: info@creative-biomart.com  Fax: 1-631-938-8127

 45-1 Ramsey Road, Shirley, NY 11967, USA

GASQPPTPTPASDAFQRKLEGCRFLHGYHRFMHSVGRVFS
 KWGESPNRSRRHSPHQALRKGVRRTRPSRKGKRLMTRGQLPRTRTRPLEQKLISE
 EDLAANDILDYKDDDDKV

Purity	> 80% as determined by SDS-PAGE and Coomassie blue staining.
Stability	Stable for 12 months from the date of receipt of the product under proper storage and handling conditions. Avoid repeated freeze-thaw cycles.
Storage	Store at -80 centigrade.
Concentration	>50 ug/mL as determined by microplate BCA method.
Preparation	Recombinant protein was captured through anti-DDK affinity column followed by conventional chromatography steps.
Protein Families	Druggable Genome, ES Cell Differentiation/IPS, Secreted Protein, Stem cell relevant signaling - DSL/Notch pathway, Stem cell relevant signaling - JAK/STAT signaling pathway
Protein Pathways	Cytokine-cytokine receptor interaction, Jak-STAT signaling pathway
Full Length	Full L.

GENE INFORMATION

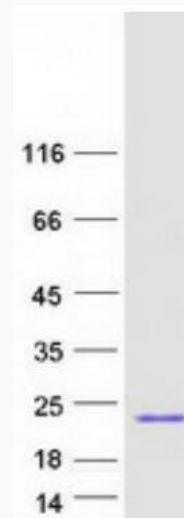
Gene Name	OSM oncostatin M [Homo sapiens (human)]
Official Symbol	OSM
Synonyms	MGC20461

 Tel: 1-631-559-9269 1-516-512-3133

 Email: info@creative-biomart.com  Fax: 1-631-938-8127

 45-1 Ramsey Road, Shirley, NY 11967, USA

Gene ID	5008
mRNA Refseq	NM_020530.6
Protein Refseq	NP_065391.1
MIM	165095
UniProt ID	P13725



Coomassie blue staining of purified OSM protein.

Tel: 1-631-559-9269 1-516-512-3133

Email: info@creative-biomart.com Fax: 1-631-938-8127

45-1 Ramsey Road, Shirley, NY 11967, USA