

Recombinant Human OSMR protein, His-tagged

Cat. No. OSMR-0599H Lot. No. (See product label)

SPECIFICATION

Product Overview	Recombinant Human OSMR protein(Q99650-1)(Glu28-Met740), fused with C-terminal His tag, was expressed in HEK293.
Species	Human
Source	HEK293
ProteinLength	Glu28-Met740
Tag	C-His
Form	Lyophilized from 0.22µm filtered solution in PBS (pH 7.4). Normally 8% trehalose is added as protectant before lyophilization.
Bio-activity	Immobilized Human OSMR, His Tag at 1ug/ml (100ul/Well) on the plate. Dose response curve for Anti-OSMR Antibody, hFc Tag with the EC50 of 2.2ng/ml determined by ELISA.
Molecular Mass	The protein has a predicted MW of 82.2 kDa. Due to glycosylation, the protein migrates to 110-140 kDa based on Tris-Bis PAGE result.
Endotoxin	Less than 1EU per µg by the LAL method.
Purity	> 95% as determined by Tris-Bis PAGE;> 95% as determined by HPLC

 Tel: 1-631-559-9269 1-516-512-3133

 Email: info@creative-biomart.com  Fax: 1-631-938-8127

 45-1 Ramsey Road, Shirley, NY 11967, USA

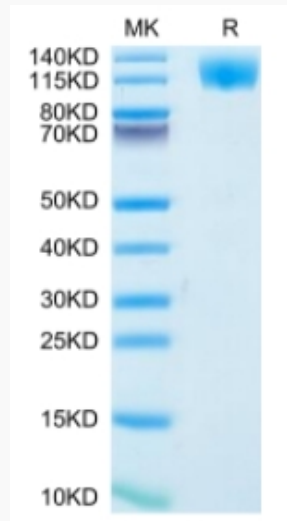
Storage	Reconstituted protein stable at -80°C for 12 months, 4°C for 1 week. Use a manual defrost freezer and avoid repeated freeze-thaw cycles.
Reconstitution	Centrifuge tubes before opening. Reconstituting to a concentration more than 100 µg/ml is recommended. Dissolve the lyophilized protein in distilled water.
GENE INFORMATION	
Gene Name	OSMR oncostatin M receptor [Homo sapiens]
Official Symbol	OSMR
Synonyms	OSMR; oncostatin M receptor; oncostatin-M-specific receptor subunit beta; OSMRB; IL-31RB; IL-31R-beta; IL-31R subunit beta; IL-31 receptor subunit beta; interleukin-31 receptor subunit beta; oncostatin-M specific receptor beta subunit; PLCA1; MGC75127; MGC150626; MGC150627;
Gene ID	9180
mRNA Refseq	NM_001168355
Protein Refseq	NP_001161827
MIM	601743
UniProt ID	Q99650

 Tel: 1-631-559-9269 1-516-512-3133

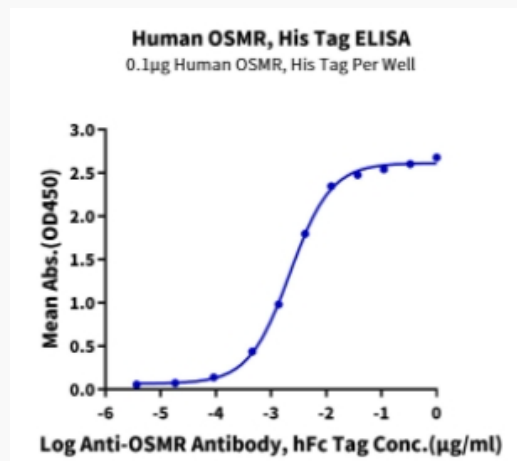
 Email: info@creative-biomart.com  Fax: 1-631-938-8127

 45-1 Ramsey Road, Shirley, NY 11967, USA

Tris-Bis PAGE



ELISA Data



 Tel: 1-631-559-9269 1-516-512-3133

 Email: info@creative-biomart.com  Fax: 1-631-938-8127

 45-1 Ramsey Road, Shirley, NY 11967, USA