

Active Recombinant Human OSMR protein, His-tagged

Cat. No. OSMR-2318H Lot. No. (See product label)

SPECIFICATION

Product Overview	Active Recombinant Human OSMR protein(Q99650-1)(Glu28-Met740) is expressed from HEK293 with His tag at the C-Terminus.
Species	Human
Source	HEK293
ProteinLength	28-740 aa
Form	Lyophilized from 0.22µm filtered solution in PBS (pH 7.4).
Bio-activity	Immobilized Human OSMR beta, His Tag at 1µg/ml (100µl/Well) on the plate. Dose response curve for Anti-OSMR Antibody, hFc Tag with the EC50 of 3.7ng/ml determined by ELISA.
Molecular Mass	The protein has a predicted MW of 82.2 kDa. Due to glycosylation, the protein migrates to 110-140 kDa based on Bis-Tris PAGE result.
Endotoxin	Less than 1 EU per µg by the LAL method.
Purity	> 95% as determined by Bis-Tris PAGE > 90% as determined by HPLC
Storage	Store at -20 to -80°C for 12 months as supplied from date of receipt. -80°C for 3 months after reconstitution. Recommend to aliquot the protein into smaller quantities for optimal storage. Please minimize freeze-thaw cycles.

 Tel: 1-631-559-9269 1-516-512-3133

 Email: info@creative-biomart.com  Fax: 1-631-938-8127

 45-1 Ramsey Road, Shirley, NY 11967, USA

Reconstitution	Dissolve the lyophilized protein in distilled water.
protein Refseq-Weblink	http://www.ncbi.nlm.nih.gov/protein/NP_001161827.1
Unit ID	Q99650
Unit ID-Weblink	https://www.uniprot.org/uniprotkb/Q99650

GENE INFORMATION

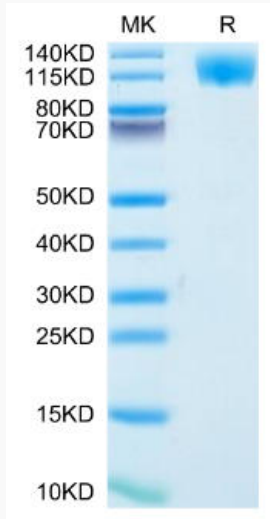
Gene Name	OSMR oncostatin M receptor [Homo sapiens]
Official Symbol	OSMR
Synonyms	OSMR; oncostatin M receptor; oncostatin-M-specific receptor subunit beta; OSMRB; IL-31RB; IL-31R-beta; IL-31R subunit beta; IL-31 receptor subunit beta; interleukin-31 receptor subunit beta; oncostatin-M specific receptor beta subunit; PLCA1; MGC75127; MGC150626; MGC150627;
Gene ID	9180
mRNA Refseq	NM_001168355
protein Refseq	NP_001161827
MIM	601743

 Tel: 1-631-559-9269 1-516-512-3133

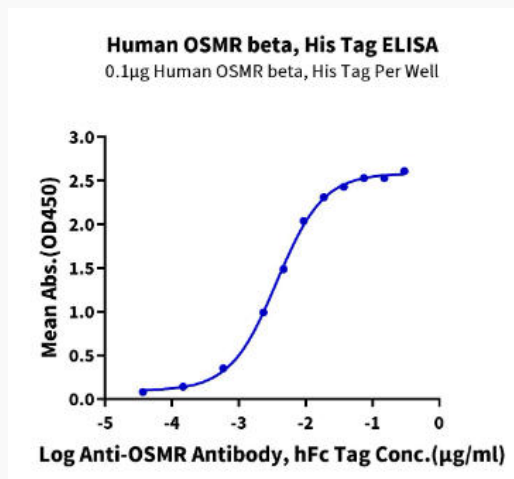
 Email: info@creative-biomart.com  Fax: 1-631-938-8127

 45-1 Ramsey Road, Shirley, NY 11967, USA

Bis-Tris PAGE



ELISA Data



 Tel: 1-631-559-9269 1-516-512-3133

 Email: info@creative-biomart.com  Fax: 1-631-938-8127

 45-1 Ramsey Road, Shirley, NY 11967, USA